

## BS-3000 Series Stereo Microscopes

|   |    |
|---|----|
| 1. BS-3001 Stereo Microscope.....                       | 2  |
| 2. BS-3002 Stereo Microscope.....                       | 4  |
| 3. BS-3003 Long Working Distance Stereo Microscope..... | 6  |
| 4. BS-3010 Stereo Microscope.....                       | 8  |
| 5. BS-3014 Stereo Microscope.....                       | 10 |
| 6. BS-3015 Stereo Microscope.....                       | 12 |
| 7. BS-3020 Zoom Stereo Microscope.....                  | 14 |
| 8. BS-3025 Zoom Stereo Microscope.....                  | 17 |
| 9. BS-3030 Zoom Stereo Microscope.....                  | 20 |
| 10. BS-3035 Zoom Stereo Microscope.....                 | 22 |
| 11. BS-3040 Zoom Stereo Microscope.....                 | 24 |
| 12. BS-3044 Binocular Zoom Stereo Microscope.....       | 27 |
| 13. BS-3045 Trinocular Zoom Stereo Microscope.....      | 30 |
| 14. BS-3060 Zoom Stereo Microscope.....                 | 33 |
| 15. BS-3060F Fluorescent Stereo Microscope.....         | 37 |
| 16. BS-3070 Wide Field Stereo Microscope.....           | 39 |
| 17. BS-3080 Parallel Light Zoom Stereo Microscope.....  | 41 |
| Accessories of Stereo Microscope.....                   | 44 |

## 1. BS-3001 Stereo Microscope



BS-3001A



BS-3001B



BS-3001C

### Introduction

BS-3001 series stereo microscopes are smart and cost-effective stereo microscope. A variety of eyepieces and objectives are available for different requirements. They are widely used in electric factories, schools laboratories, sculpture, families and so on.

### Feature

1. Sharp stereo erect image over a wide field of view.
2. Upright binocular head with locked-in eyepiece. The left ocular-tube with diopter adjustment  $\pm 5dp$ .
3. V-shape inserted objective with locked-in structure, easy to replace.
4. CE approved.
5. A wide range of accessories for selection.

### Application

BS-3001 series stereo microscopes are widely applied in school education, circuit board inspection and repair, surface mount technology work, electronics inspection, coin collecting, gemology and gemstone setting, engraving, inspection and repair of small parts.

### Specification

| Item         | Specification   | BS-3001A | BS-3001B | BS-3001C |
|--------------|---|----------|----------|----------|
| Viewing Head | Upright Binocular Viewing Head, Interpupillary Distance 55-75mm, diopter adjustment $\pm 5dp$ on left ocular-tube, Tube diameter 23.2mm | ●        | ●        | ●        |
| Eyepiece     | WF5×/20mm   | ○        | ○        | ○        |
|              | WF10×/20mm  | ●        | ●        | ●        |
|              | WF15×/15mm  | ○        | ○        | ○        |
|              | WF20×/10mm  | ○        | ○        | ○        |
| Objective    | 1×, Working distance 57mm   | ○        | ○        | ○        |

|               |  |   |   |   |
|---------------|--|---|---|---|
|               | 2x, Working distance 80mm                                      | ● | ● | ● |
|               | 3x, Working distance 61mm                                      | ○ | ○ | ○ |
|               | 4x, Working distance 57mm                                      | ○ | ○ | ○ |
|               | 6x, Working distance 66mm                                      | ○ | ○ | ○ |
| Illumination  | Natural illumination, Natural light                            | ● |   |   |
|               | Incident illumination, Incandescent lamp 12V10W                |   | ● |   |
|               | Incident & transmitted illumination, Incandescent lamp 12V10W  |   |   | ● |
| Working Plate | Φ60 White&black Plate  | ● | ● |   |
|               | Φ95 Frosted glass and White&Black Plate                        |   |   | ● |
| Power supply  | 110V/60HZ or 220V/50HZ.  | ● | ● | ● |
| Package       | 4pcs/carton, 68cm*31cm*38cm, Gross weight 11kg, Net weight 7kg | ● | ● | ● |

Note: ● Standard Outfit, ○ Optional

## 2. BS-3002 Stereo Microscope



BS-3002A



BS-3002B



BS-3002C

### Introduction

BS-3002 series stereo microscopes are smart and cost-effective stereo microscopes. A variety of eyepieces and objectives are available for different requirements. They are widely used in electric factories, schools laboratories, sculpture, families and so on.

### Feature

1. Sharp stereo erect image over a wide field of view.
2. 45° Inclined binocular head with locked-in eyepiece. The left ocular-tube with diopter adjustment  $\pm 5dp$ .
3. V-shape inserted objective with locked-in structure, easy to replace.
4. CE approved.
5. A wide range of accessories for selection.

### Application

BS-3002 series stereo microscopes are widely applied in school education, circuit board inspection and repair, surface mount technology work, electronics inspection, coin collecting, gemology and gemstone setting, engraving, inspection and repair of small parts.

### Specification

| Item         | Specification   | BS-3002A | BS-3002B | BS-3002C |
|--------------|---|----------|----------|----------|
| Viewing Head | Binocular Viewing Head, 45° Inclined, Interpupillary Distance 55-75mm, diopter adjustment $\pm 5dp$ on left ocular-tube, Tube diameter 23.2mm | ●        | ●        | ●        |
| Eyepiece     | WF5×/20mm   | ○        | ○        | ○        |
|              | WF10×/20mm  | ●        | ●        | ●        |
|              | WF15×/15mm  | ○        | ○        | ○        |
|              | WF20×/10mm  | ○        | ○        | ○        |
| Objective    | 1×, Working distance 57mm   | ○        | ○        | ○        |

|               |  |   |   |   |
|---------------|--|---|---|---|
|               | 2x, Working distance 80mm                                      | ● | ● | ● |
|               | 3x, Working distance 61mm                                      | ○ | ○ | ○ |
|               | 4x, Working distance 57mm                                      | ○ | ○ | ○ |
|               | 6x, Working distance 66mm                                      | ○ | ○ | ○ |
| Illumination  | Natural illumination, Natural light                            | ● |   |   |
|               | Incident illumination, Incandescent lamp 12V10W                |   | ● |   |
|               | Incident & transmitted illumination, Incandescent lamp 12V10W  |   |   | ● |
| Working Plate | Φ60 White&black Plate  | ● | ● |   |
|               | Φ95 Frosted glass and White&Black Plate                        |   |   | ● |
| Power supply  | 110V/60HZ or 220V/50HZ.  | ● | ● | ● |
| Package       | 4pcs/carton, 68cm*31cm*38cm, Gross weight 11kg, Net weight 7kg | ● | ● | ● |

Note: ● Standard Outfit, ○ Optional

### 3. BS-3003 Long Working Distance Stereo Microscope



#### Introduction

BS-3003 Long working distance stereo microscope is a smart and cost-effective stereo microscopes. A variety of eyepieces and objectives are available for different requirements. The long working distance feature provides more choice for different samples and works. It is widely used in electric factories, schools laboratories, sculpture, families and so on.

#### Feature

1. Sharp stereo erect image over a wide field of view.
2. 45° Inclined binocular head with locked-in eyepiece. The left ocular-tube with diopter adjustment  $\pm 5dp$ .
3. V-shape inserted objective with locked-in structure, easy to replace.
4. Come with high brightness 3W LED lamp.
5. A wide range of accessories for selection.

#### Application

BS-3003 stereo microscope is widely applied in school education, circuit board inspection and repair, surface mount technology work, electronics inspection, coin collecting, gemology and gemstone setting, engraving, inspection and repair of small parts.

#### Specification

| Item         | Specification   | BS-3003 |
|--------------|---|---------|
| Viewing Head | Binocular Viewing Head, 45° Inclined, Interpupillary Distance 55-75mm, diopter adjustment $\pm 5dp$ on left ocular-tube, Tube diameter 23.2mm | ●       |
| Eyepiece     | WF5 $\times$ /20mm  | ○       |

|              |  |   |
|--------------|--|---|
|              | WF10×/20mm   | ● |
|              | WF15×/15mm   | ○ |
|              | WF20×/10mm   | ○ |
| Objective    | 0.5×, Working distance 250mm                                     | ○ |
|              | 1×, Working distance 230mm                                       | ● |
|              | 2×, Working distance 80mm  | ○ |
| Illumination | Incident 3W LED illumination                                     | ● |
| Power supply | 110V/60HZ or 220V/50HZ, 110V-240V Wide input voltage is optional | ● |
| Package      | 1pcs/carton, 41cm*20cm*43cm, Gross weight 7.5kg, Net weight 6kg  | ● |

Note: ● Standard Outfit, ○ Optional

## 4. BS-3010 Stereo Microscope



BS-3010A



BS-3010B

### Introduction

Stereo microscopes are also known as low magnification and dissecting microscopes. BS-3010 series stereo microscope offers upright, un-reversed 3D images with high resolution and high quality. Optional eyepieces and objectives expand magnification range and working distances.

BS-3010 is a smart and cost-effective stereo microscope. Optional cold light and ring light can be chosen for this microscope. They are widely used in electric factories, schools laboratories, sculpture, families and so on.

### Feature

1. High quality, high function and excellent cost performance.
2. Ergonomic design, sharp image display, wide viewing field and easy to operate.
3. Ideal instrument in academic, medical and industrial field.

### Application

BS-3010 series stereo microscopes are widely applied in circuit board repair, circuit board inspection, surface mount technology work, electronics inspection, coin collecting, gemology and gemstone setting, engraving, and repair and inspection of small parts.

### Specification

| Item         | Specification   | BS-3010A | BS-3010B |
|--------------|---|----------|----------|
| Viewing Head | Binocular Viewing Head, 45° Inclined, Interpupillary Distance 55-75mm, Un-rotatable   | •        |          |
|              | Binocular Viewing Head, 45° Inclined, Interpupillary Distance 55-75mm, 360° Rotatable |          | •        |



|                  |   |   |   |
|------------------|---|---|---|
| Eyepiece         | WF5×/20mm                               | ○ | ○ |
|                  | WF10×/20mm                              | ● | ● |
|                  | WF15×/15mm                              | ○ | ○ |
|                  | WF20×/10mm                              | ○ | ○ |
| Objective        | 2×, 4×                                  | ● | ● |
|                  | 1×, 2×                                  | ○ | ○ |
|                  | 1×, 3×                                  | ○ | ○ |
| Working Distance | 57mm                                    | ● |   |
|                  | 76mm                                    |   | ● |
| Illumination     | Transmitted halogen light 12V/ 10W      | ● | ● |
|                  | Incident halogen light 12V/ 10W         | ● | ● |
|                  | Transmitted & Incident LED illumination | ○ | ○ |
| Package          | 4pcs/carton, 68cm*31cm*38cm, 16kg       | ● | ● |

Note: ● Standard Outfit, ○ Optional

## 5. BS-3014 Stereo Microscope



BS-3014A



BS-3014B



BS-3014C



BS-3014D

### Introduction

BS-3014 series stereo microscopes offer upright, un-reversed 3D images with high resolution. The microscopes are smart and cost-effective. Optional cold light and ring light can be chosen for these microscopes. They are widely used in electric factories, schools laboratories, sculpture, families and so on.

### Feature

1. 20×/40× magnification, can be extended to 5×-160× with optional eyepiece and auxiliary objective.
2. High eyepoint WF10×/20mm eyepiece.
3. 100mm Long working distance.
4. Ergonomic design, sharp image, wide viewing field, high depth of field and easy to operate.
5. Ideal instrument in education, medical and industrial field.

### Application

The BS-3014 series stereo microscopes are of great value in a variety of applications such as circuit board repair, circuit board inspection, surface mount technology work, electronics inspection, coin collecting, gemology and gemstone setting, engraving, repair and inspection of small parts, dissection and school education etc.

### Specification

| Item          | Specification   | BS-3014A | BS-3014B | BS-3014C | BS-3014D |
|---------------|---|----------|----------|----------|----------|
| Head          | Binocular Viewing Head, Inclined at 45°, 360° rotatable, Interpupillary adjusting distance 54-76mm, left eyepiece with diopter adjustment±5 | ●        | ●        | ●        | ●        |
| Eyepiece      | High eyepoint WF10×/20mm eyepiece   | ●        | ●        | ●        | ●        |
|               | WF15×/15mm eyepiece   | ○        | ○        | ○        | ○        |
|               | WF20×/10mm eyepiece   | ○        | ○        | ○        | ○        |
| Objective     | 2×, 4×  | ●        | ●        | ●        | ●        |
|               | 1×, 2×  | ○        | ○        | ○        | ○        |
|               | 1×, 3×  | ○        | ○        | ○        | ○        |
| Magnification | 20×, 40×, with optional eyepiece and auxiliary objective, can   | ●        | ●        | ●        | ●        |

|                     |   |   |   |   |   |
|---------------------|---|---|---|---|---|
|                     | be extended to 5×-160×  |   |   |   |   |
| Auxiliary Objective | 0.5× objective, W.D.: 165mm   | ○ | ○ | ○ | ○ |
|                     | 1.5× objective, W.D.: 45mm  | ○ | ○ | ○ | ○ |
|                     | 2× objective, W.D.: 30mm  | ○ | ○ | ○ | ○ |
| Working Distance    | 100mm   | ● | ● | ● | ● |
| Head Mount          | 76mm  | ● | ● | ● | ● |
| Illumination        | Transmitted light 12V/15W Halogen, Brightness Adjustable  |   | ● |   |   |
|                     | Incident light 12V/15W Halogen, Brightness Adjustable   |   | ● |   |   |
|                     | Transmitted light 3W LED, Brightness Adjustable   |   | ○ |   | ● |
|                     | Incident light 3W LED, Brightness Adjustable  |   | ○ |   | ● |
|                     | LED ring light  | ○ | ○ | ○ | ○ |
|                     | Cold light source   | ○ | ○ | ○ | ○ |
| Focusing Arm        | Coarse focusing, focusing range 50mm  | ● | ● | ● | ● |
| Pillar Stand        | Pole height 240mm, pole diameter Φ32mm, with Clips, Φ95 black&White plate, Base size: 200×255×22mm, no illumination                   | ● |   |   |   |
|                     | Pole height 240mm, pole diameter Φ32mm, with Clips, Φ95 black&White plate, glass plate, Base size: 200×255×60mm, Halogen illumination |   | ● |   |   |
|                     | Pole height 240mm, pole diameter Φ32mm, with Clips, Φ95 black&White plate, Base size: 205×275×22mm, no illumination                   |   |   | ● |   |
|                     | Pole height 240mm, pole diameter Φ32mm, with Clips, Φ95 black&White plate, glass plate, Base size: 205×275×40mm, LED illumination     |   |   |   | ● |
| Package             | 1pc/1carton, 38.5cm*24cm*37cm, Net/Gross Weight: 3.5/4.5kg  | ● | ● | ● | ● |

Note: ● Standard Outfit, ○ Optional

## Optical Parameters

| Objective | Eyepiece   |       |            |        |            |       | WD    |
|-----------|------------|-------|------------|--------|------------|-------|-------|
|           | WF10×/20mm |       | WF15×/15mm |        | WF20×/10mm |       |       |
|           | Mag.       | FOV   | Mag.       | FOV    | Mag.       | FOV   |       |
| 1×        | 10×        | 20mm  | 15×        | 15mm   | 20×        | 10mm  | 100mm |
| 2×        | 20×        | 10mm  | 30×        | 7.5mm  | 40×        | 5mm   |       |
| 3×        | 30×        | 6.6mm | 45×        | 5mm    | 60×        | 3.3mm |       |
| 4×        | 40×        | 5mm   | 60×        | 3.75mm | 80×        | 2.5mm |       |

## 6. BS-3015 Stereo Microscope



BS-3015B

### Introduction

BS-3015 series stereo microscopes offer upright, un-reversed 3D images with high resolution. The microscopes are smart and cost-effective. Optional eyepiece, objectives, cold light and ring light are available for the microscopes. They are widely used in electric factories, schools laboratories, sculpture, families and so on.

### Feature

1. High quality, high function and excellent cost performance.
2. Ergonomic design, sharp image display, wide viewing field and easy to operate.
3. Various objectives 1×/2×, 1×/3×, 1×/4×, 2×/3×, 2×/4×, Magnification range 5×-240×.
4. Providing a wide viewing eyepiece with field of  $\Phi 23\text{mm}$ .
5. Ideal instrument in academic, medical and industrial field.
6. ESD painting is available.

### Application

The BS-3015 series stereo microscopes are of great value in a variety of applications such as circuit board repair, circuit board inspection, surface mount technology work, electronics inspection, coin collecting, gemology and gemstone setting, engraving, repair and inspection of small parts.

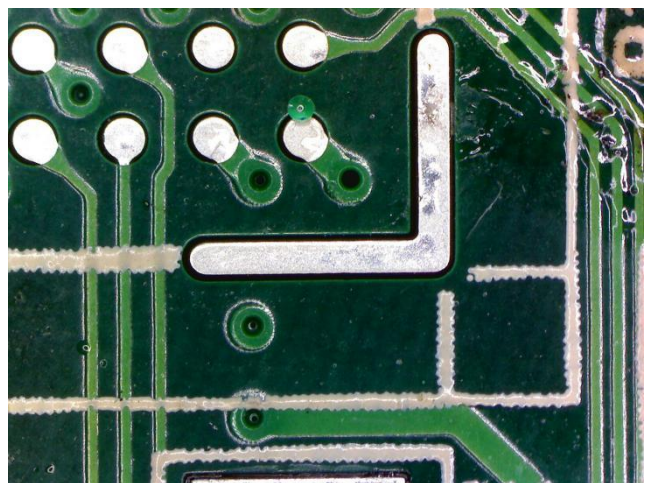
### Specification

| Item         | Specification  | BS-3015B | BS-3015T |
|--------------|--|----------|----------|
| Viewing Head | Binocular Viewing Head, Inclined at 45°, 360° rotatable, Interpupillary adjusting distance 55-75mm | ●        |          |
|              | Binocular Viewing Head, Inclined at 60°, 360° rotatable, Interpupillary adjusting distance 55-75mm | ○        | ○        |
|              | Trinocular Viewing Head, Inclined at 45°, 360° rotatable, Interpupillary adjusting                 |          | ●        |

|                             |  |                  |   |   |
|-----------------------------|--|------------------|---|---|
|                             | distance 55-75mm, Light distribution: 2:8                        |                  |   |   |
| Diopter Adjustment Eyepiece | WF10×/23mm eyepiece  |                  | ● | ● |
|                             | WF10×/22mm eyepiece  |                  | ○ | ○ |
|                             | WF10×/20mm eyepiece  |                  | ○ | ○ |
|                             | WF15×/16mm eyepiece  |                  | ○ | ○ |
|                             | WF20×/12mm eyepiece  |                  | ○ | ○ |
|                             | WF30×/8mm eyepiece   |                  | ○ | ○ |
|                             | WF10× eyepiece with cross hair                                   |                  | ○ | ○ |
| Objective                   | Changeable objective   | 2×, 4×           | ● | ● |
|                             |  | 2×, 3×           | ○ | ○ |
|                             |  | 1×, 2×           | ○ | ○ |
|                             |  | 1×, 3×           | ○ | ○ |
|                             |  | 1×, 4×           | ○ | ○ |
|                             | Auxiliary objective  | 2×, WD: 30mm     | ○ | ○ |
|                             |  | 0.75×, WD: 120mm | ○ | ○ |
|                             |  | 0.63×, WD: 137mm | ○ | ○ |
|                             |  | 0.5×, WD: 180mm  | ○ | ○ |
| Working Distance            | 97mm   |                  | ● | ● |
| Head Mount                  | Diameter 76mm  |                  | ● | ● |
| Focusing                    | Coarse Focus, Focusing Range 100mm                               |                  | ● | ● |
| Illumination                | Incident Illumination 100V-240V/ LED                             |                  | ● | ● |
|                             | Transmitted Illumination 100V-240V/ LED                          |                  | ● | ● |
| Photo Adapter               | Used for connecting Nikon or Canon DSLR camera to the microscope |                  | ○ | ○ |
| Video Adapter               | 0.5× C-mount   |                  | ● | ● |
|                             | 1× C-mount or 23.2mm video tube                                  |                  | ○ | ○ |

Note: ● Standard Outfit, ○ Optional

### Sample Image



## 7. BS-3020 Zoom Stereo Microscope



BS-3020B



BS-3020T



BS-3020BD

### Introduction

Stereo microscopes are also known as low magnification and dissecting microscopes. BS-3020 Stereo Zoom Microscope on a post stand offers upright, un-reversed 3D images that very clear throughout the zoom range. Optional eyepieces and auxiliary objectives expand magnification range and working distances.

BS-3020 is a very popular zoom stereo microscope. Optional cold light and ring light can be chosen for this microscope. You can also choose trinocular head to add digital camera with the appropriate camera adapter. In summary BS-3020 gives many range of magnifications, working distances, photo options, accessories and is very convenient to use – no wonder it is popular!

### Feature

1. High quality, high function and excellent cost performance.
2. High resolution, Wide viewing field, Long working distance.
3. Ergonomic design, sharp image display, wide viewing field and easy to operate.
4. Providing a wide viewing field of  $\Phi 20\text{mm}$  with the zoom ratio of 1:4.5.
5. Ideal instrument in academic, medical and industrial field.

### Application

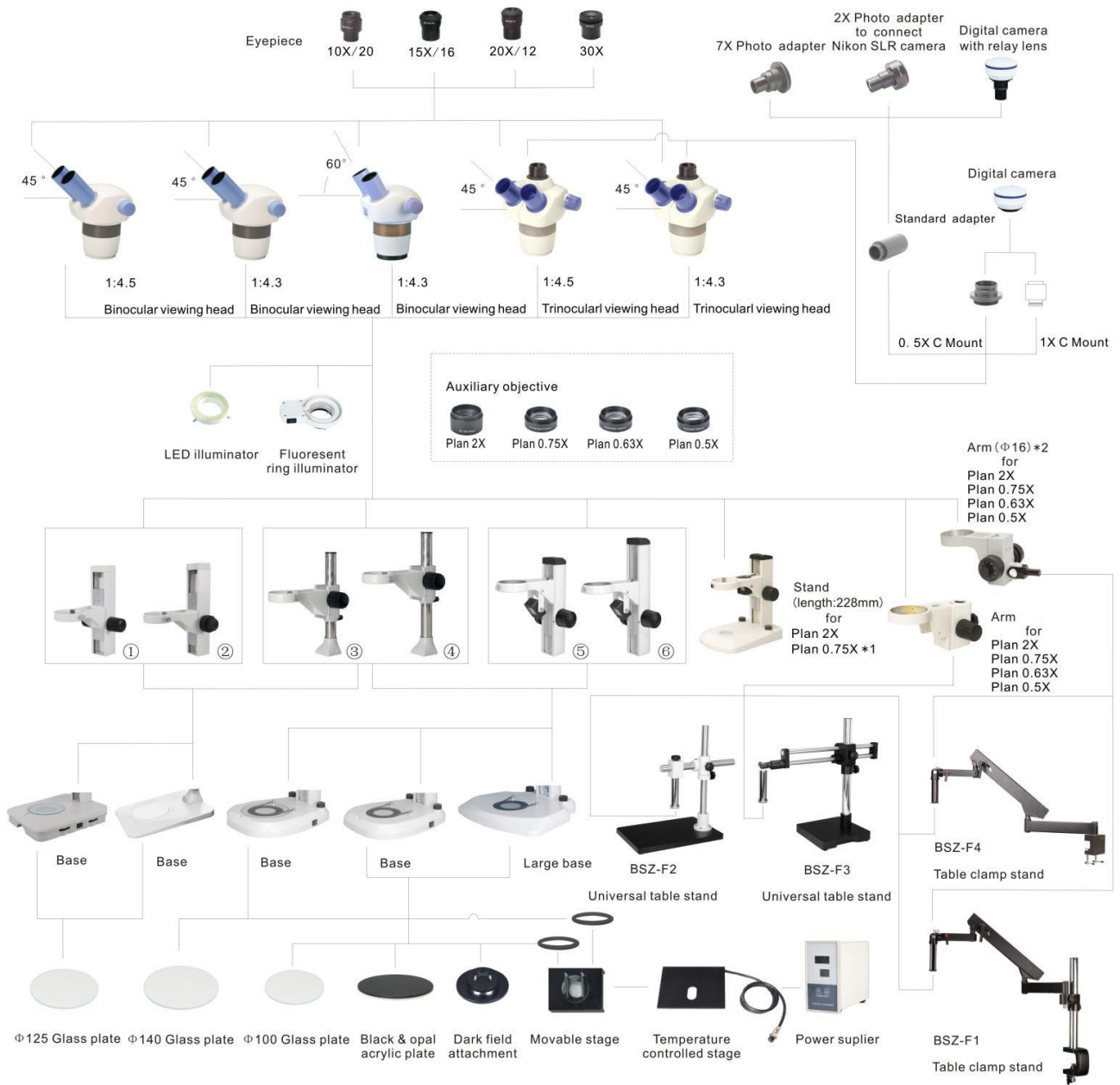
The microscope can be used for circuit board repair and inspection, SMT work, electronics inspection, coin collecting, gemology and gemstone setting, engraving, repair and inspection of small parts.

**Specification**

| Item             | Specification  | BS-3020B           | BS-3020T | BS-3020BD |   |
|------------------|--|--------------------|----------|-----------|---|
| Viewing Head     | Binocular head, inclined at 45°, Interpupillary Distance 55-75mm   | ●                  |          |           |   |
|                  | Binocular head, inclined at 60°, Interpupillary Distance 55-75mm   | ○                  | ○        |           |   |
|                  | Trinocular head, inclined at 45°, Interpupillary Distance, 55-75mm   |                    | ●        |           |   |
|                  | Binocular head with 1.3MP digital camera, inclined at 45°, Interpupillary Distance 55-75mm, ScopelImage 9.0 software |                    |          | ●         |   |
| Eyepiece         | Wide field eyepiece 10×/ 20mm  | ●                  | ●        | ●         |   |
|                  | Wide field eyepiece 15×/ 16mm  | ○                  | ○        | ○         |   |
|                  | Wide field eyepiece 20×/ 12mm  | ○                  | ○        | ○         |   |
|                  | Wide field eyepiece 30×/8mm  | ○                  | ○        | ○         |   |
|                  | WF10× Eyepiece with cross line   | ○                  | ○        | ○         |   |
| Objective        | Zoom objective   | 0.7×~3×            | ○        | ○         | ○ |
|                  |  | 1×~4.5×            | ●        | ●         | ● |
|                  | Auxiliary objective  | 2×, W.D.: 30mm     | ○        | ○         | ○ |
|                  |  | 0.75×, W.D.: 120mm | ○        | ○         | ○ |
|                  |  | 0.63×, W.D.: 137mm | ○        | ○         | ○ |
|                  |  | 0.5×, W.D.: 180mm  | ○        | ○         | ○ |
| Zoom Ratio       | 1:4.3  | ○                  | ○        | ○         |   |
|                  | 1:4.5  | ●                  | ●        | ●         |   |
| Working Distance | 97mm   | ●                  | ●        | ●         |   |
| Focusing         | Coarse Focus, Focusing Range 100mm   | ●                  | ●        | ●         |   |
| Illumination     | Incident Illumination 100V-240V/ LED   | ●                  | ●        | ●         |   |
|                  | Transmitted Illumination 100V-240V/ LED  | ●                  | ●        | ●         |   |
| Attachment       | Photo Attachment (Used for connecting Nikon or Canon DSLR camera to the microscope)                                  | ○                  | ○        | ○         |   |
|                  | Video Attachment (0.5× C-mount)  | ●                  | ●        | ●         |   |
| Package          | 1pc/carton, 36.5cm*31cm*52cm, 6kg  | ●                  | ●        | ●         |   |

Note: ● Standard Outfit, ○ Optional

### System Diagram



|                       | ①     | ②     | ③   | ④   | ⑤     | ⑥     |
|-----------------------|-------|-------|-----|-----|-------|-------|
| Length                | 279mm | 279mm | 12" | 18" | 280mm | 330mm |
| Coaxial coarse & fine |       | √     |     |     |       |       |

Note: \*1 The height of sample couldn't be over 30mm when viewed by the objective Plan 0.75X.  
 \*2 Take away the connecting column of BSZ-F1 and BSZ-F4.



## 8. BS-3025 Zoom Stereo Microscope



BS-3025B1



BS-3025B2



BS-3025B3



BS-3025B4



BS-3025T1



BS-3025T2



BS-3025T3



BS-3025T4

### Introduction

BS-3025 series Stereo Zoom Microscopes offer sharp 3D images which are very clear throughout the zoom range. These microscopes are very popular and cost effective. Optional eyepieces and auxiliary objectives can expand magnification range and working distances. Cold light and ring light can be chosen for this microscope.

### Feature

6. 7×-45× zoom magnification power with sharp images, can be extended to 3.5×-270× with optional eyepiece and auxiliary objective.
7. High eyepoint WF10×/20mm eyepiece.
8. 100mm Long working distance.
9. Ergonomic design, sharp image, wide viewing field, high depth of field and easy to operate.
10. Ideal instrument in education, medical and industrial field.

### Application

BS-3025 series microscopes are widely used in education, lab research, biology, metallurgy, engineering, chemistry, manufacturing, and in the medical, forensic science and veterinary industries. The microscopes can be used for circuit board repair and inspection, SMT work, electronics inspection, dissection, coin collecting, gemology and gemstone setting, engraving, repair and inspection of small parts.

**Specification**

| Item             | Specification   | BS-3025<br>B1     | BS-3025B2 | BS-3025<br>B3 | BS-3025<br>B4 |
|------------------|---|-------------------|-----------|---------------|---------------|
| Viewing Head     | Binocular head, inclined at 45°, Interpupillary Distance 54-76mm, diopter adjustment for both tubes, 30mm tube                        | ●                 | ●         | ●             | ●             |
|                  | Trinocular head, inclined at 45°, Interpupillary Distance, 54-76mm, 2:8, diopter adjustment for both tubes, 30mm tube                 | ○                 | ○         | ○             | ○             |
| Eyepiece         | WF10×/ 20mm eyepiece (micrometer is optional)   | ●                 | ●         | ●             | ●             |
|                  | WF15×/15mm eyepiece (micrometer is optional)  | ○                 | ○         | ○             | ○             |
|                  | WF20×/10mm eyepiece (micrometer is optional)  | ○                 | ○         | ○             | ○             |
|                  | WF25×/9mm eyepiece  | ○                 | ○         | ○             | ○             |
|                  | WF30×/8mm eyepiece  | ○                 | ○         | ○             | ○             |
| Objective        | Zoom objective  | 0.7×-4.5×         | ●         | ●             | ●             |
|                  | Auxiliary objective   | 2×, W.D.: 30mm    | ○         | ○             | ○             |
|                  |   | 1.5×, W.D.: 45mm  | ○         | ○             | ○             |
|                  |   | 0.5×, W.D.: 165mm | ○         | ○             | ○             |
| Zoom Ratio       | 1:6.3   | ●                 | ●         | ●             | ●             |
| Working Distance | 100mm   | ●                 | ●         | ●             | ●             |
| Head Mount       | 76mm  | ●                 | ●         | ●             | ●             |
| Illumination     | Transmitted light 12V/15W Halogen, Brightness Adjustable  |                   | ●         |               |               |
|                  | Incident light 12V/15W Halogen, Brightness Adjustable   |                   | ●         |               |               |
|                  | Transmitted light 3W LED, Brightness Adjustable   |                   | ○         |               | ●             |
|                  | Incident light 3W LED, Brightness Adjustable  |                   | ○         |               | ●             |
|                  | LED ring light  | ○                 | ○         | ○             | ○             |
|                  | Cold light source   | ○                 | ○         | ○             | ○             |
| Focusing Arm     | Coarse focusing, focusing range 50mm  | ●                 | ●         | ●             | ●             |
| Pillar Stand     | Pole height 240mm, pole diameter Φ32mm, with Clips, Φ95 black&White plate, Base size: 200×255×22mm, no illumination                   | ●                 |           |               |               |
|                  | Pole height 240mm, pole diameter Φ32mm, with Clips, Φ95 black&White plate, glass plate, Base size: 200×255×60mm, Halogen illumination |                   | ●         |               |               |
|                  | Pole height 240mm, pole diameter Φ32mm, with Clips, Φ95 black&White plate, Base size: 205×275×22mm, no illumination                   |                   |           | ●             |               |
|                  | Pole height 240mm, pole diameter Φ32mm, with Clips, Φ95 black&White plate, glass plate, Base size: 205×275×40mm, LED illumination     |                   |           |               | ●             |
| C-Mount          | 0.35× C-mount   | ○                 | ○         | ○             | ○             |
|                  | 0.5× C-mount  | ○                 | ○         | ○             | ○             |
|                  | 1× C-mount  | ○                 | ○         | ○             | ○             |
| Package          | 1pc/1carton, 38.5cm*24cm*37cm, Net/Gross Weight: 4.5/5.5kg  | ●                 | ●         | ●             | ●             |

Note: ● Standard Outfit, ○ Optional

**Optical Parameters**

| Objective  | Standard Objective/<br>W.D.100mm |        | 0.5× Auxiliary Objective/<br>W.D.165mm |        | 1.5× Auxiliary Objective/<br>W.D.45mm |        | 2× Auxiliary Objective/<br>W.D.30mm |        |
|------------|----------------------------------|--------|--|--------|---------------------------------------|--------|-------------------------------------|--------|
|            | Mag.                             | FOV    | Mag.                                   | FOV    | Mag.                                  | FOV    | Mag.                                | FOV    |
| WF10×/20mm | 7.0×                             | 28.6mm | 3.5×                                   | 57.2mm | 10.5×                                 | 19mm   | 14.0×                               | 14.3mm |
|            | 45.0×                            | 4.4mm  | 22.5×                                  | 8.8mm  | 67.5×                                 | 2.9mm  | 90.0×                               | 2.2mm  |
| WF15×/15mm | 10.5×                            | 21.4mm | 5.25×                                  | 42.8mm | 15.75×                                | 14.3mm | 21.0×                               | 10.7mm |
|            | 67.5×                            | 3.3 mm | 33.75×                                 | 6.6mm  | 101.25×                               | 2.2mm  | 135.0×                              | 1.67mm |
| WF20×/10mm | 14.0×                            | 14.3mm | 7.0×                                   | 28.6mm | 21.0×                                 | 9.5mm  | 28.0×                               | 7.1mm  |
|            | 90.0×                            | 2.2mm  | 45.0×                                  | 4.4mm  | 135.0×                                | 1.5mm  | 180.0×                              | 1.1mm  |
| WF25×/9mm  | 17.5×                            | 12.8mm | 8.75×                                  | 25.6mm | 26.25×                                | 8.5mm  | 35.0×                               | 6.4mm  |
|            | 112.5×                           | 2.0mm  | 56.25×                                 | 4.0mm  | 168.75×                               | 1.3mm  | 225.0×                              | 1.0mm  |
| WF30×/8mm  | 21.0×                            | 11.4mm | 10.5×                                  | 22.8mm | 31.5×                                 | 7.6mm  | 42.0×                               | 5.7mm  |
|            | 135.0×                           | 1.7mm  | 67.5×                                  | 3.5mm  | 202.5×                                | 1.2mm  | 270.0×                              | 0.89mm |

## 9. BS-3030 Zoom Stereo Microscope



BS-3030A



BS-3030AT



BS-3030B



BS-3030BT

### Introduction

Stereo microscopes are also known as low magnification and dissecting microscopes. BS-3030 series Zoom Stereo Microscopes offer high quality 3D images throughout the zoom range. Optional eyepieces and auxiliary objectives expand magnification range and working distances. Various stand, Cold light source and ring light are optional for these microscopes.

### Feature

1. High quality and excellent cost performance.
2. Ergonomic design, sharp image display, wide viewing field and easy to operate.
3. Providing a wide viewing field of  $\Phi 22\text{mm}$  with the zoom ratio of 1:6.7, zoom range: 0.67 $\times$ -4.5 $\times$ .
4. Transmitted & Reflected 3W LED Illumination are available for BS-3030B and BS-3030BT.
5. Ideal instrument in academic, medical and industrial field.

### Application

BS-3030 series stereo microscopes are of great value in a variety of applications such as school education, circuit board repair, circuit board inspection, surface mount technology work, electronics inspection, coin collecting, gemology and gemstone setting, engraving, repair and inspection of small parts.

### Specification

| Item           | Specification   | BS-3030A | BS-3030AT | BS-3030B | BS-3030BT |
|----------------|---|----------|-----------|----------|-----------|
| Optical system | Greenough Optical System  | ●        | ●         | ●        | ●         |
| Viewing Head   | Binocular head, inclined at 45°, rotatable 360°, Interpupillary Distance 54-75mm, diopter adjustment on both eyepieces  | ●        |           | ●        |           |
|                | Trinocular head, inclined at 45°, rotatable 360°, Interpupillary Distance 54-75mm, diopter adjustment on both eyepieces |          | ●         |          | ●         |
| Eyepiece       | WF10 $\times$ / $\Phi 22\text{mm}$  | ●        | ●         | ●        | ●         |
|                | WF15 $\times$ / $\Phi 16\text{ mm}$   | ○        | ○         | ○        | ○         |
|                | WF20 $\times$ / $\Phi 12\text{ mm}$   | ○        | ○         | ○        | ○         |

|                      |   |                  |   |   |   |   |
|----------------------|---|------------------|---|---|---|---|
|                      | WF25×/Φ9 mm   |                  | ○ | ○ | ○ | ○ |
|                      | WF30×/Φ8 mm   |                  | ○ | ○ | ○ | ○ |
|                      | WF10×Φ22mm Eyepiece with cross line(Eyepiece micrometer)                                    |                  | ○ | ○ | ○ | ○ |
| Objective            | Zoom objective  | 0.67×-4.5×       | ● | ● | ● | ● |
|                      | Auxiliary objective   | 0.3×, W.D. 287mm | ○ | ○ | ○ | ○ |
|                      |   | 0.5×, W.D. 177mm | ○ | ○ | ○ | ○ |
|                      |   | 0.7×, W.D. 113mm | ○ | ○ | ○ | ○ |
|                      |   | 1.5×, W.D. 47mm  | ○ | ○ | ○ | ○ |
|                      |   | 2×, W.D. 26mm    | ○ | ○ | ○ | ○ |
| Zoom Ratio           | 1:6.7   | ●                | ● | ● | ● |   |
| Magnification        | 6.7×-45×  | ●                | ● | ● | ● |   |
| Working Distance     | 105mm   | ●                | ● | ● | ● |   |
| Focusing             | Coarse focus knob with tension adjustable, moving range: 106mm. Focusing arm diameter: 76mm | ●                | ● | ● | ● |   |
| Column Height        | 300mm   | ●                | ● | ● | ● |   |
|                      | 500mm (used with 0.3× and 0.5× auxiliary objective)   | ○                | ○ | ○ | ○ |   |
| Microscope Base Size | 205×275×22mm  | ●                | ● |   |   |   |
|                      | 205×275×40mm  |                  |   | ● | ● |   |
| Illumination         | Reflected illumination: 5V 3W LED   | ○                | ○ | ● | ● |   |
|                      | Transmitted illumination: 5V 3W LED   | ○                | ○ | ● | ● |   |
| Attachment           | Photo Adapter (For Nikon, Canon, Olympus, Sony DSLR Cameras)                                |                  | ○ |   | ○ |   |
|                      | 0.5× C-mount adapter (adjustable)   |                  | ● |   | ● |   |
|                      | 1× C-mount adapter  |                  | ○ |   | ○ |   |
| Package              | 1pc/carton, 51cm*37cm*31cm, Net weight: 5.5kg, Gross weight: 6.5kg                          | ●                | ● | ● | ● |   |

Note: ● Standard Outfit, ○ Optional

## 10. BS-3035 Zoom Stereo Microscope



BS-3035T1

BS-3035B2

BS-3035B3

BS-3035T4

We have 4 stands and binocular/trinocular head, the models are: BS-3035B1, BS-3035T1, BS-3035B2, BS-3035T2, BS-3035B3, BS-3035T3, BS-3035B4, BS-3035T4.

“B” means binocular, “T” means trinocular.

“1” means the stand with round base, without illumination.

“2” means the stand with square base, without illumination

“3” means the stand with round base, with transmitted and Incident illumination

“4” means the stand with square base, with transmitted and Incident illumination

### Introduction

BS-3035 series Zoom Stereo Microscope offer sharp 3 D images with very competitive price. Optional auxiliary objectives, light source, stands and other accessories can fulfill different requirements.

### Feature

1. Well-coated optical components, providing sharp and high contrast images and ensure large depth of field.
2. High quality optical system with zoom magnification 8×-50×, zoom ratio 1:6.3.
3. Various eyepieces, objectives and other accessories can meet different requirements.

### Application

BS-3035 series stereo zoom microscope is of great value in a variety of applications such as circuit board repair, circuit board inspection, surface mount technology work, electronics inspection, coin collecting, gemology and gemstone setting, engraving, repair and inspection of small parts.

### Specification

| Item         | Specification   | BS-3035B3 | BS-3035T4 |
|--------------|---|-----------|-----------|
| Viewing Head | Binocular Head, Inclined at 45°, Interpupillary Distance 52-75mm                            | ●         | ○         |
|              | Trinocular Head, Inclined at 45°, Interpupillary Distance 52-75mm, 30:70 light distribution | ○         | ●         |
| Eyepiece     | Extra wide field eyepiece EW10×/22mm  | ●         | ●         |
|              | WF15×/16mm  |           |           |
|              | WF20×/12.5mm  |           |           |

|                     |   |   |   |
|---------------------|---|---|---|
| Zoom Objective      | 0.8×-5×   | ● | ● |
| Zoom Ratio          | 6.3:1   | ● | ● |
| Working Distance    | 115mm   | ● | ● |
| Auxiliary objective | 2×, WD 45mm   | ○ | ○ |
|                     | 0.5×, WD 210mm  |   |   |
| Stage Plate         | Frosted Glass Plate, Diameter 100mm                           | ● | ● |
|                     | White&Black round plate, Diameter 100mm                       | ● | ● |
| Focusing Unit       | Coarse Focus Knob with tension adjustable, Moving range 100mm | ● | ● |
| Illumination        | Incident Illumination 100V-240V/ LED                          | ● | ● |
|                     | Transmitted Illumination 100V-240V/ LED                       | ● | ● |
| Attachment          | Photo Adapter (For Nikon, Canon, Olympus, Sony DSLR Cameras)  |   | ○ |
|                     | 0.5X C-mount Adapter  |   | ● |
| Package             | 1pc/carton, 36.5cm*31cm*52cm, 8.5kg                           | ● | ● |

Note: ● Standard Outfit, ○ Optional

## 11. BS-3040 Zoom Stereo Microscope



BS-3040



BS-3040T



BS-3040BD

### Introduction

Stereo microscopes are also known as low magnification and dissecting microscopes. BS-3040 Zoom Stereo Microscope on a post stand offers upright, un-reversed 3 D images that remain in focus throughout the zoom range. Optional eyepieces and auxiliary objectives expand magnification range and working distances.

BS-3040 is a very popular zoom stereo microscope. Optional cold light and ring light can be chosen for this microscope. You can also choose trinocular head to add digital camera with the appropriate camera adapter. In summary, BS-3040 gives many range of magnifications, working distances, photo options, accessories and is very convenient to use – no wonder it is popular!

### Feature

1. With high quality optical components, providing sharp and striking contrast image and ensure flat image at large depth of field, Ease the tiredness with ergonomic design.
2. With LED light for both incident and transmitted illumination, Providing even illumination and life expectancy can reach 20,000 hours.
3. With Complete eyepieces, objectives and accessories, it is an ideal instrument for industry assembling, inspection and teaching field.
4. BS-3040BD Support Multi-language (Arabic, Chinese, English, French, German, Japanese, Polish).
5. BS-3040BD support Windows Vista / Win 7 / Win8 / Mac Operation System. The software can preview, take photos and video, do image processing and measurement.

### Application

BS-3040 Series stereo zoom microscopes are of great value in a variety of applications such as circuit board repair, circuit board inspection, surface mount technology work, electronics inspection, coin collecting, gemology and gemstone setting, engraving, and repair and inspection of small parts.



**Specification**

| Item                | Specification  | BS-3040<br>B | BS-3040<br>T | BS-3040<br>BD |
|---------------------|--|--------------|--------------|---------------|
| Viewing Head        | Binocular Viewing Head, Inclined at 45°, Interpupillary Distance 52-75mm   | ●            | ○            | ○             |
|                     | Binocular Viewing Head, Inclined at 60°, Interpupillary Distance 52-75mm   | ○            | ○            | ○             |
|                     | Trinocular Viewing Head, Inclined at 45°, Interpupillary Distance 52-75mm  | ○            | ●            | ○             |
|                     | Digital Binocular Viewing Head, Inclined at 45°, Interpupillary Distance 52-75mm, 3.2MP(2048×1536), ScopelImage 9.0 Software | ○            | ○            | ●             |
| Eyepiece            | Extra wide field eyepiece EW10×/22mm   | ●            | ●            | ●             |
|                     | WF15×/Φ16mm  | ○            | ○            | ○             |
|                     | WF20×/Φ12mm  | ○            | ○            | ○             |
|                     | WF30×/Φ8mm   | ○            | ○            | ○             |
| Zoom Objective      | 0.8×-5×  | ●            | ●            | ●             |
| Zoom Ratio          | 6.3:1  | ●            | ●            | ●             |
| Working Distance    | 115mm  | ●            | ●            | ●             |
| Auxiliary objective | 0.5×, W.D.: 220mm  | ○            | ○            | ○             |
|                     | 0.7×, W.D.: 125mm  | ○            | ○            | ○             |
|                     | 2×, W.D.: 45mm   | ○            | ○            | ○             |
| Stage Plate         | Glass Insert Plate, Diameter 100mm   | ●            | ●            | ●             |
|                     | White&Black round plate, Diameter 100mm  | ●            | ●            | ●             |
| Focusing Unit       | Coarse Focus Knob with tension adjustable, Moving range 105mm  | ●            | ●            | ●             |
| Illumination        | Incident Illumination 100V-240V/ LED   | ●            | ●            | ●             |
|                     | Transmitted Illumination 100V-240V/ LED  | ●            | ●            | ●             |
| Attachment          | Photo Attachment   | ○            | ○            | ○             |
|                     | Video Attachment   | ○            | ○            | ○             |
| Package             | 1pc/carton, 36.5cm*31cm*52cm, 8.5kg  | ●            | ●            | ●             |

Note: ● Standard Outfit, ○ Optional

### System Diagram



## 12. BS-3044 Binocular Zoom Stereo Microscope



BS-3044A



BS-3044B

### Introduction

BS-3044A/B Binocular Zoom Stereo Microscope offer upright, un-reversed 3 D images that remain in focus throughout the zoom range. They have zoom ratio of 1:8.3. Optional eyepieces and auxiliary objectives can be used to expand magnification range and working distances.

### Feature

1. High zoom ratio of 1:8.3, zoom range of 0.6×-5×, large field of view up to  $\Phi 76\text{mm}$ .
2. High quality optical system, providing sharp and high contrast image and ensure flat image at large depth of field, Ease the tiredness with ergonomic design.
3. With LED light for both incident and transmitted illumination, Providing even illumination and life expectancy can reach 60000 hours.
4. With complete eyepieces, objectives and accessories, it is an ideal instrument for industry assembling, inspection and teaching field.

### Application

BS-3044A/B Binocular stereo zoom microscope can be used for circuit board repairing and inspection, surface mount technology work, electronics inspection, coin collecting, gemology and gemstone setting, engraving, repair and inspection of small parts.

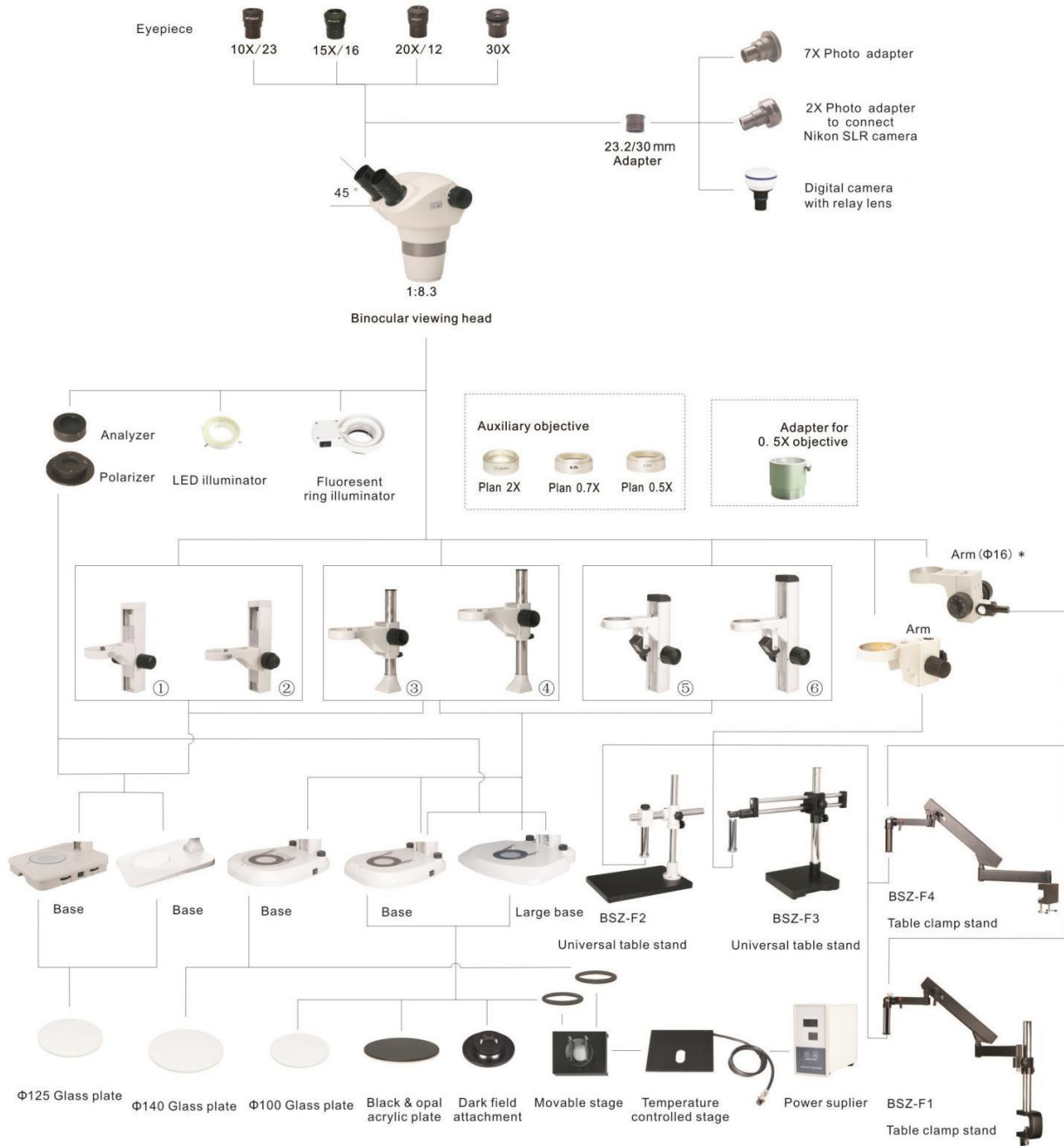
### Specification

| Item         | Specification  | BS-3044A | BS-3044B |
|--------------|--|----------|----------|
| Viewing Head | Binocular Viewing Head, Inclined at 45°, Interpupillary Distance 55-75mm | •        | •        |
| Eyepiece     | Extra wide field eyepiece WF10×/ $\Phi 23\text{mm}$                      | •        | •        |

|                     |   |   |   |
|---------------------|---|---|---|
|                     | WF15×/Φ16mm   | ○ | ○ |
|                     | WF20×/Φ12mm   | ○ | ○ |
|                     | WF30×/Φ9mm  | ○ | ○ |
| Zoom Objective      | 0.6×-5×   | ● | ● |
| Zoom Ratio          | 8.3:1   | ● | ● |
| Working Distance    | 115mm   | ● | ● |
| Auxiliary objective | 0.5×, WD: 220mm   | ○ | ○ |
|                     | 0.7×, WD: 125mm   | ○ | ○ |
|                     | 2×, WD: 45mm  | ○ | ○ |
| Stage Plate         | Glass Insert Plate, Diameter 100mm                            | ● |   |
|                     | Glass Insert Plate, Diameter 125mm                            |   | ● |
|                     | White&Black round plate, Diameter 100mm                       | ● |   |
|                     | White&Black round plate, Diameter 125mm                       |   | ● |
| Focusing Unit       | Coarse Focus Knob with tension adjustable, Moving range 105mm | ● | ● |
| Illumination        | Incident Illumination 100V-240V/ LED                          | ● | ● |
|                     | Transmitted Illumination 100V-240V/ LED                       | ● | ● |
| Video Adapter       | 30mm adapter ring for 23.2mm eyepiece adapter                 | ○ | ○ |
|                     | 0.45×/0.5× C-mount adapter                                    | ○ | ○ |
| Photo Adapter       | Photo Adapter for Nikon or Canon DSLR camera                  | ○ | ○ |

Note: ● Standard Outfit, ○ Optional

### System Diagram



|                       | ①     | ②     | ③   | ④   | ⑤     | ⑥     |
|-----------------------|-------|-------|-----|-----|-------|-------|
| Length                | 279mm | 279mm | 12" | 18" | 280mm | 330mm |
| Coaxial coarse & fine |       | √     |     |     |       |       |

Note: \* Take away the connecting column of BSZ-F1 and BSZ-F4.

### 13. BS-3045 Trinocular Zoom Stereo Microscope



BS-3045A



BS-3045B

#### Introduction

BS-3045A/B Trinocular Zoom Stereo Microscope offer upright, un-reversed 3 D images that remain in focus throughout the zoom range. They have zoom ratio of 1:8.3. Optional eyepieces and auxiliary objectives can be used to expand magnification range and working distances.

#### Feature

1. High zoom ratio of 1:8.3, zoom range of 0.6x-5x, large field of view up to  $\Phi 76\text{mm}$ .
2. High quality optical system, providing sharp and high contrast image and ensure flat image at large depth of field, Ease the tiredness with ergonomic design.
3. With LED light for both incident and transmitted illumination, Providing even illumination and life expectancy can reach 60000 hours.
4. With complete eyepieces, objectives and accessories, it is an ideal instrument for industry assembling, inspection and teaching field.

#### Application

BS-3045A/B trinocular stereo zoom microscope can be used for circuit board repairing and inspection, surface mount technology work, electronics inspection, coin collecting, gemology and gemstone setting, engraving, repair and inspection of small parts.

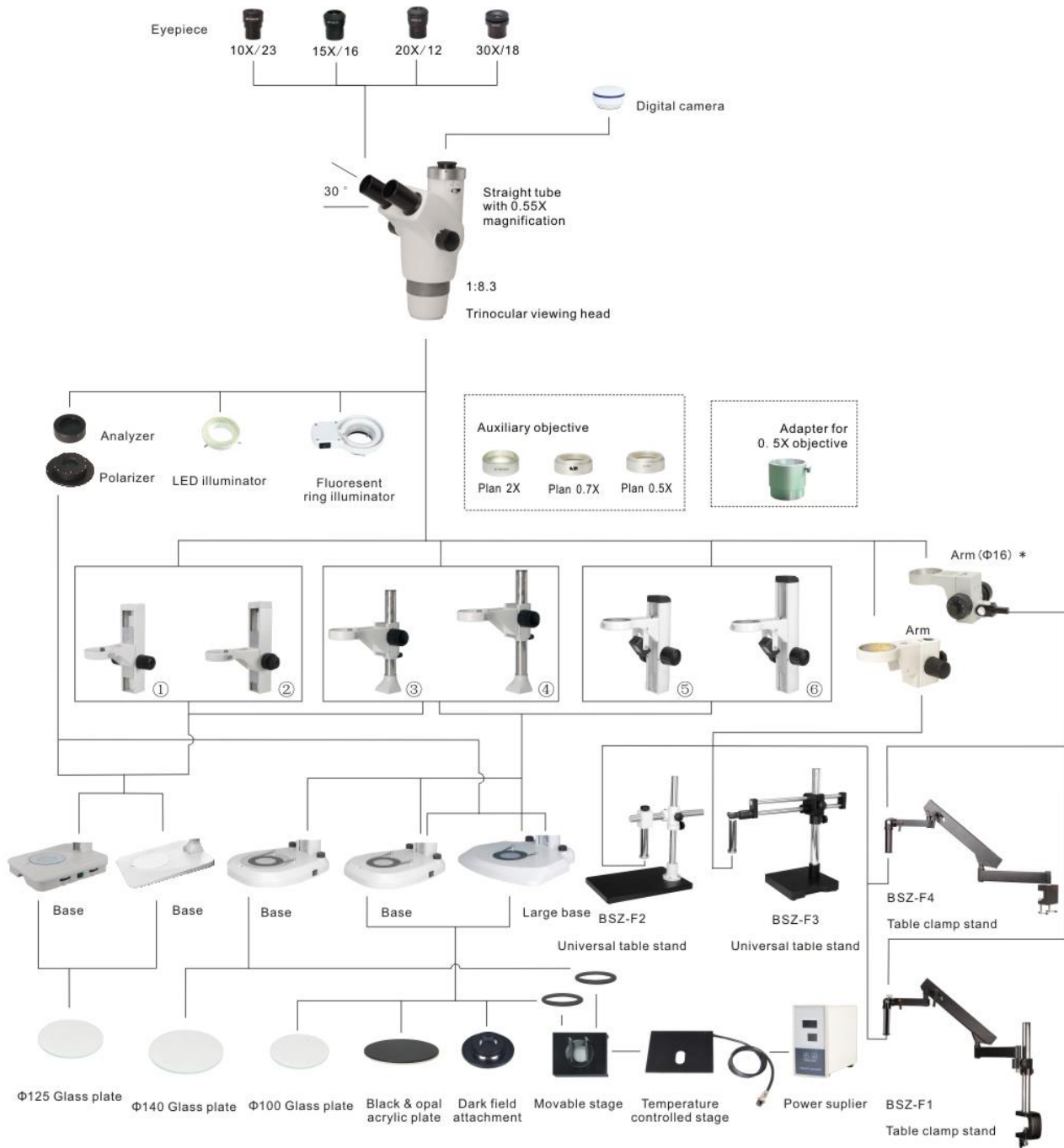
#### Specification

| Item         | Specification   | BS-3045A | BS-3045B |
|--------------|---|----------|----------|
| Viewing Head | Trinocular Viewing Head, Inclined at 30°, Interpupillary Distance 55-75mm | •        | •        |

|                     |   |   |   |
|---------------------|---|---|---|
| Eyepiece            | Extra wide field eyepiece WF10×/Φ23mm                         | ● | ● |
|                     | WF15×/Φ16mm   | ○ | ○ |
|                     | WF20×/Φ12mm   | ○ | ○ |
|                     | WF30×/Φ9mm  | ○ | ○ |
| Zoom Objective      | 0.6×-5×   | ● | ● |
| Zoom Ratio          | 8.3:1   | ● | ● |
| Working Distance    | 115mm   | ● | ● |
| Auxiliary objective | 0.5×, WD: 220mm   | ○ | ○ |
|                     | 0.7×, WD: 125mm   | ○ | ○ |
|                     | 2×, WD: 45mm  | ○ | ○ |
| Stage Plate         | Glass Insert Plate, Diameter 100mm                            | ● |   |
|                     | Glass Insert Plate, Diameter 125mm                            |   | ● |
|                     | White&Black round plate, Diameter 100mm                       | ● |   |
|                     | White&Black round plate, Diameter 125mm                       |   | ● |
| Focusing Unit       | Coarse Focus Knob with tension adjustable, Moving range 105mm | ● | ● |
| Illumination        | Incident Illumination 100V-240V/ LED                          | ● | ● |
|                     | Transmitted Illumination 100V-240V/ LED                       | ● | ● |
| Video Adapter       | 0.55× C-mount   | ● | ● |
|                     | 1× C-mount  | ○ | ○ |

Note: ● Standard Outfit, ○ Optional

### System Diagram



|                       | ①     | ②     | ③   | ④   | ⑤     | ⑥     |
|-----------------------|-------|-------|-----|-----|-------|-------|
| Length                | 279mm | 279mm | 12" | 18" | 280mm | 330mm |
| Coaxial coarse & fine |       | √     |     |     |       |       |

Note: \* Take away the connecting column of BSZ-F1 and BSZ-F4.



## 14. BS-3060 Zoom Stereo Microscope



BS-3060A/B/C



BS-3060AT/BT/CT



BS-3060 with coaxial episcopic illuminator

### Introduction

Stereo microscopes are also known as low magnification and dissecting microscopes. BS-3060 Series Zoom Stereo Microscope with Infinity Parallel Optical System on a post stand offers upright, un-reversed 3-D images that remain in focus throughout the zoom range. Optional eyepieces and auxiliary objectives expand magnification range and working distances.

This is a high level stereo microscope. Optional cold light and ring light can be chosen for this microscope. You can also choose trinocular head to add digital camera with the appropriate camera adapter. In summary BS-3060 series Parallel Stereo Microscopes give the greatest range of magnifications, working distances, photo options, accessories and are the most convenient to use – no wonder they are popular!

## Feature

1. Excellent Image Quality & Optical Performance with Infinity Parallel Optical System.
2. Comfortable Operation with Ergonomic Design Principle.
3. With LED light for both incident and transmitted illumination, Providing even illumination and life expectancy can reach 6000 hours.
4. A Wide Range of Accessories to be Equipped with the Microscope for Multi-purpose. It is an Outstanding Assistant in Industrial, Medical and Scientific Research Areas.

## Application

BS-3060 series stereo zoom microscopes with Infinity Parallel Optical System is of great value in a variety of applications such as Industrial, Medical and Scientific Research Areas, circuit board repair, circuit board inspection, surface mount technology work, electronics inspection, coin collecting, gemology and gemstone setting, engraving, and repair and inspection of small parts.

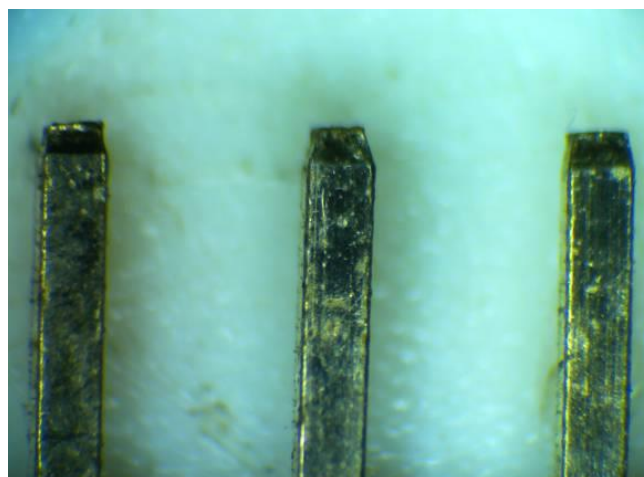
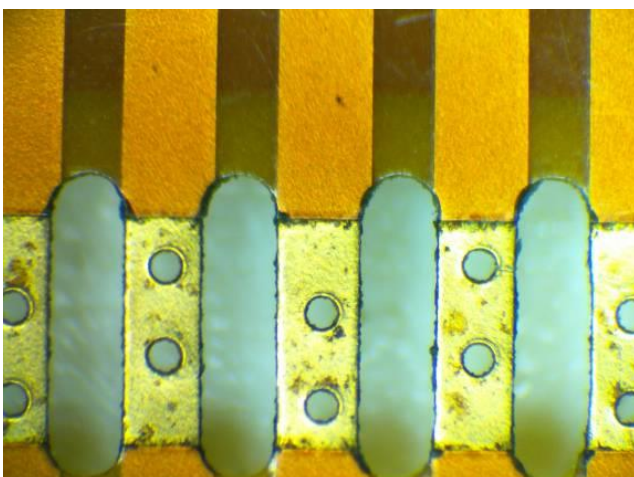
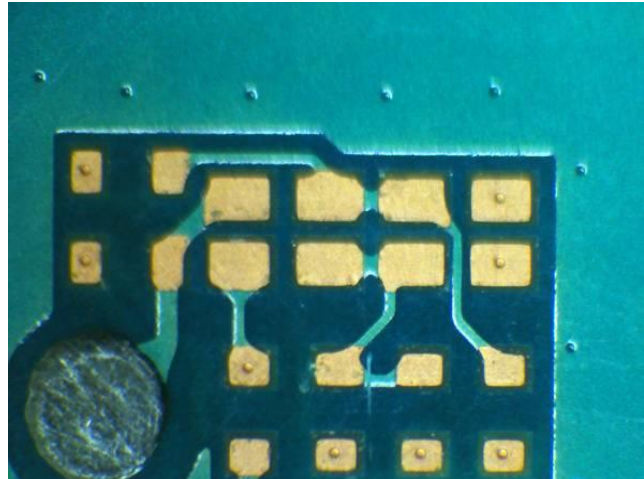
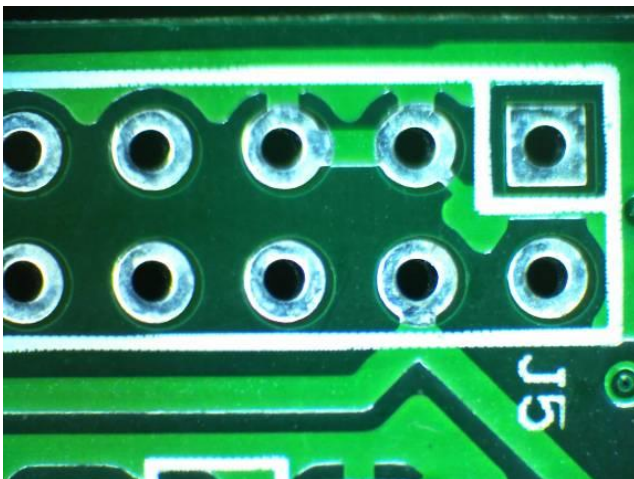
## Specification

| Item                 | Specification   | BS-3060A | BS-3060B | BS-3060C |
|----------------------|---|----------|----------|----------|
| Optical System       | Infinite Parallel Zoom Optical System   | ●        | ●        | ●        |
| Viewing Head         | Binocular Head, 20°Inclination, Interpupillary Distance 55-75mm                   | ●        | ●        | ●        |
|                      | Tilting Binocular Eyepiece Tube, 5°-35° Inclined, Interpupillary Distance 55-75mm | ○        | ○        | ○        |
| Eyepiece             | EW10×/Φ22mm   | ●        | ●        | ●        |
|                      | EW10×/Φ24mm   | ○        | ○        | ○        |
|                      | WF15×/Φ16mm   | ○        | ○        | ○        |
|                      | WF20×/Φ12mm   | ○        | ○        | ○        |
|                      | WF30×/Φ8mm  | ○        | ○        | ○        |
| Zoom Objective       | 0.8x-5x   | ●        |          |          |
|                      | 0.8x-6.4x   |          | ●        |          |
|                      | 0.8x-8x   |          |          | ●        |
| Objective            | Plan Achromatic Objective 1x, W.D.: 78mm  | ●        | ●        | ●        |
|                      | Achromatic Objective 0.3x, W.D.: 276mm  | ○        | ○        | ○        |
|                      | Achromatic Objective 0.5x, W.D.: 195mm  | ○        | ○        | ○        |
|                      | Plan Apochromatic Objective 0.5x, W.D.: 126mm                                     | ○        | ○        | ○        |
|                      | Plan Achromatic Objective 2x, W.D.: 32.5mm  | ○        | ○        | ○        |
| Zoom Ratio           | 1: 6  | ●        |          |          |
|                      | 1: 8  |          | ●        |          |
|                      | 1: 10   |          |          | ●        |
| Focusing Unit        | Coarse Focus Knob with tension adjustable, Moving range 105mm                     | ●        | ●        | ○        |
|                      | Coaxial Coarse & Fine Focus Knob with tension adjustable, Moving range 105mm      | ○        | ○        | ●        |
| Illumination         | Transmission & Reflection LED Illumination, Brightness Adjustable                 | ●        | ●        | ●        |
| Optional Accessories | Coaxial Illumination  | ○        | ○        | ○        |
|                      | Epi-Fluorescent Attachment  | ○        | ○        | ○        |

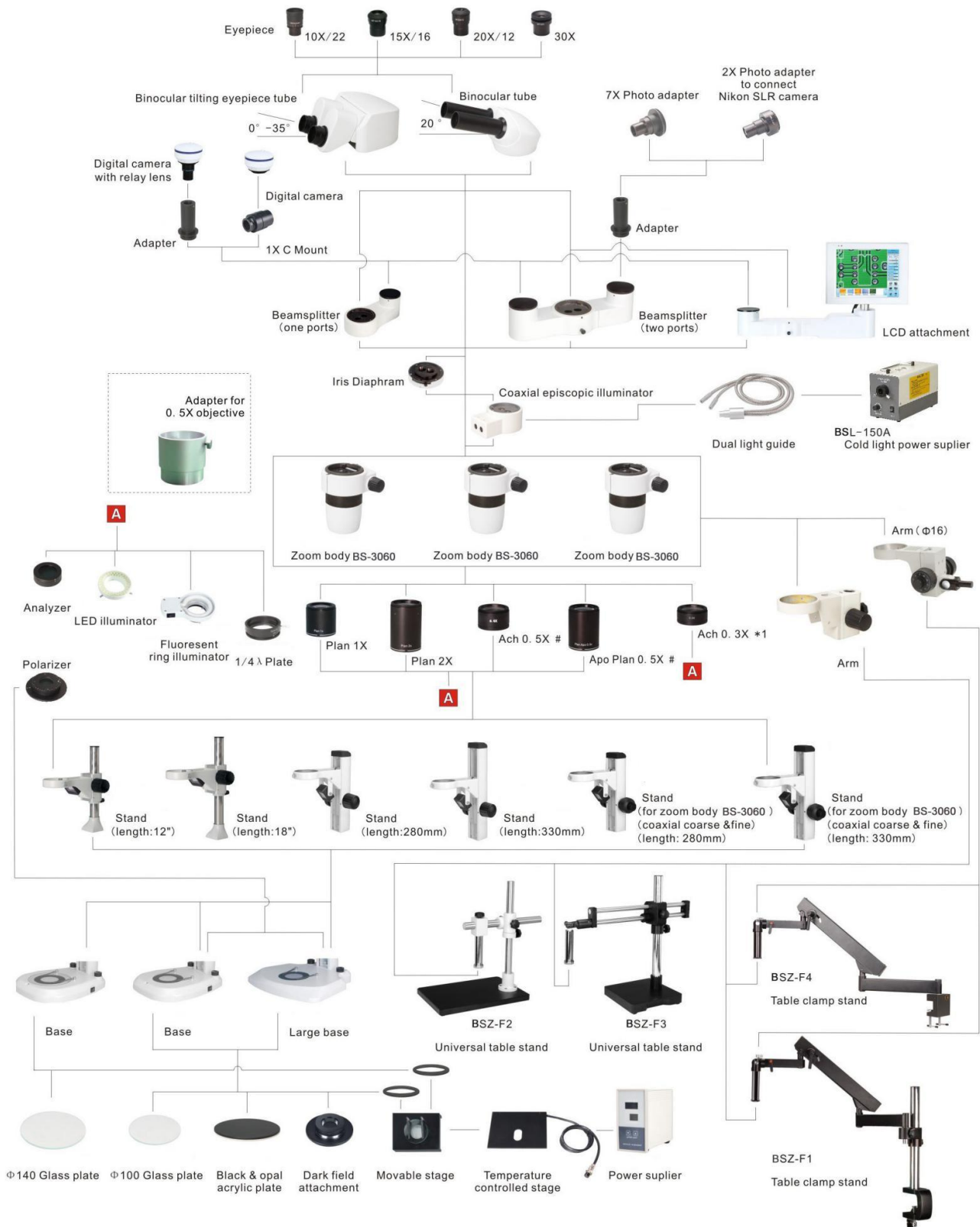
|         |   |   |   |   |
|---------|---|---|---|---|
|         | Dark Field Attachment                         | ○ | ○ | ○ |
|         | Simple Polarization Set                       | ○ | ○ | ○ |
|         | Iris Diaphragm                                | ○ | ○ | ○ |
|         | Beam splitter (one port)                      | ○ | ○ | ○ |
|         | Beam splitter (two ports)                     | ○ | ○ | ○ |
|         | Photography & video attachment                | ○ | ○ | ○ |
|         | Moveable Stage                                | ○ | ○ | ○ |
|         | Temperature controlled Stage                  | ○ | ○ | ○ |
|         | Universal Table Stand/Table Clamp Stand       | ○ | ○ | ○ |
|         | Cold light illumination with dual light guide | ○ | ○ | ○ |
|         | LCD Attachment                                | ○ | ○ | ○ |
| Package | 1pc/carton, 49cm*40cm*56cm, 9.5kg             | ● | ● | ● |

Note: ● Standard Outfit, ○ Optional

### Sample Image



### System Diagram



## 15. BS-3060F Fluorescent Stereo Microscope



### Introduction

BS-3060F series fluorescent stereo microscopes were designed for observation of live cells. They cover wide magnification range from 2.4x~480x, and offer sophisticated accessories. This allows the scientist to see and photograph specimens from macro views to high-magnification micro visualization. Photo tube comes with the microscope, CCD camera can be mounted on the photo tube for image capture and analysis.

### Feature

1. Excellent Image Quality and Performance with Infinity Parallel Optical System.
2. High-eyepoint Eyepieces with Diopter Adjustment makes comfortable viewing.
3. Wide Magnification range from 2.4x~480x, allows you to select the best magnification to match your application, extending from the macro to the micro range.
4. High quality Epi-fluorescence attachment allows easy observation of living cells under fluorescence methods such as GFP. Switching between fluorescence and transmitted illumination is quick and easy.
5. CCD camera can be mounted on the photo tube. Because 100% of the light is delivered to the photo port, bright images are guaranteed.
6. A Wide Range of Accessories are available for Multi-purpose.

### Application

BS-3060 series fluorescent stereo microscopes can be used in biology, life science, Forensic Science, Embryology/IVF, Lab-on-a-Chip, Palaeontology, Marine Biology, Regenerative Studies, Formulation Science, Veterinary areas and so on. They provide great help for scientists.

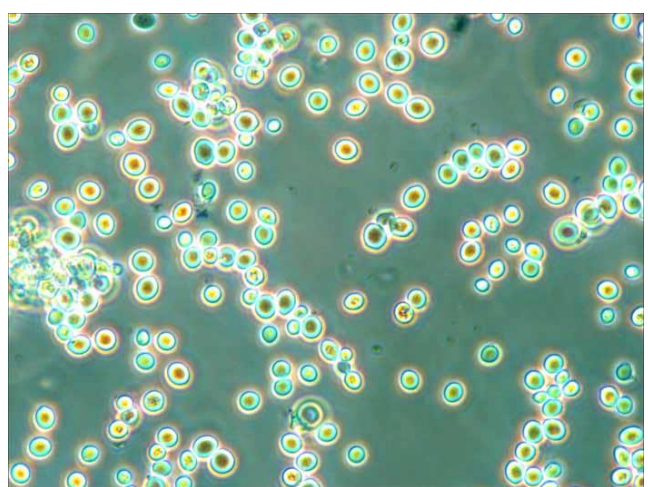
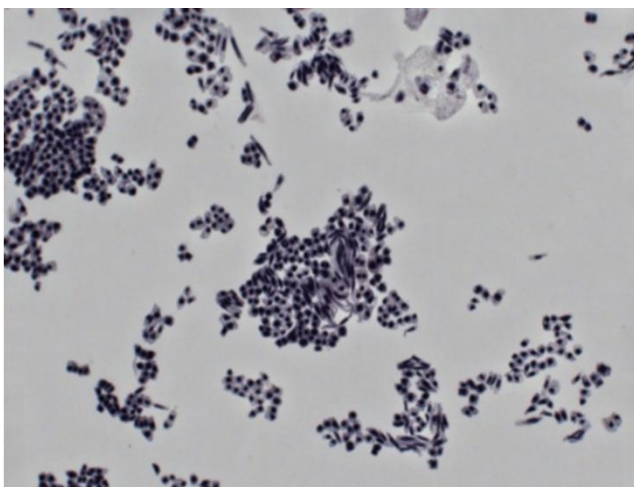
### Specification

| Item           | Specification   | BS-3060<br>FA | BS-3060<br>FB | BS-3060<br>FC |
|----------------|---|---------------|---------------|---------------|
| Optical System | Infinite Parallel Zoom Optical System                           | •             | •             | •             |
| Viewing Head   | Binocular Head, 20°Inclination, Interpupillary Distance 55-75mm | •             | •             | •             |

|                        |   |   |   |   |
|------------------------|---|---|---|---|
|                        | Tilting Binocular Eyepiece Tube, 5°-35° Inclined, Interpupillary Distance 55-75mm | ○ | ○ | ○ |
| Eyepiece               | EW10×/Φ22mm   | ● | ● | ● |
|                        | EW10×/Φ24mm   | ○ | ○ | ○ |
|                        | WF15×/Φ16mm   | ○ | ○ | ○ |
|                        | WF20×/Φ12mm   | ○ | ○ | ○ |
|                        | WF30×/Φ8mm  | ○ | ○ | ○ |
| Fluorescent Attachment | GFP-B(EX460-500,DM505,BA510-560)  | ● | ● | ● |
|                        | GFP-L(EX460-500,DM505,BA510)  | ● | ● | ● |
|                        | G(EX515-550, DM570, BA590)  | ○ | ○ | ○ |
| Zoom Objective         | 0.8×-5×   | ● |   |   |
|                        | 0.8×-6.4×   |   | ● |   |
|                        | 0.8×-8×   |   |   | ● |
| Objective              | Plan Achromatic Objective 1×, W.D.: 78mm  | ● | ● | ● |
|                        | Achromatic Objective 0.3×, W.D.: 276mm  | ○ | ○ | ○ |
|                        | Achromatic Objective 0.5×, W.D.: 195mm  | ○ | ○ | ○ |
|                        | Plan Apochromatic Objective 0.5×, W.D.: 126mm                                     | ○ | ○ | ○ |
|                        | Plan Achromatic Objective 2×, W.D.: 32.5mm  | ○ | ○ | ○ |
| Zoom Ratio             | 1: 6  | ● |   |   |
|                        | 1: 8  |   | ● |   |
|                        | 1: 10   |   |   | ● |
| Focusing Range         | 105mm   | ● | ● | ● |
| Stand                  | Coaxial coarse focusing stand   | ● | ● |   |
|                        | Coaxial coarse&fine focusing stand  |   |   | ● |
| Illumination           | Transmitted & Incident LED Illumination, Brightness Adjustable                    | ● | ● | ● |
|                        | 100W Ultra hi-voltage spherical mercury lamp, power supplier with digital display | ● | ● | ● |

Note: ● Standard Outfit, ○ Optional

## Sample Image



## 16. BS-3070 Wide Field Stereo Microscope



BS-3070A

BS-3070B

BS-3070C

### Introduction

BS-3070 series stereo microscopes features of large viewing field without eyepiece. Users can see sharp and stereoscopic images from the lens in microscope head. Built-in LED illumination provides bright and even light for comfortable viewing, brightness can be adjusted with the external power box. The microscopes are easy to operate and widely applied to biological dissection, electronics producing and inspection, minerals, historical relic restoration etc.

### Feature

1. With high quality optical components, providing sharp and high contrast image at super-long working distance, super-large viewing field, large depth of focus, reduce the fatigue and improve the working efficiency.
2. With LED light, Providing even illumination and life expectancy can reach 60000 hours.
3. Various objectives are available, 2×, 4×, 6× objectives are standard, 8×, 10×, 15× and 6×SL objectives are optional. The objectives can be conveniently changed.

### Application

The BS-3070 series stereo microscopes are of great value in a variety of applications such as education, biological dissection and industrial areas. They are mainly used for circuit board inspection and repair, surface mount, electronics inspection, coin collecting, gemology and gemstone identification, engraving, repair and inspection of small parts. They are mainly used for following areas:

- Electronics: PCB board assembling, inspection, repair and weld.
- Precision project & Plastic: QC, Micro-welding, Micro-machining, Injecting.
- Medical & Dentistry Equipment Manufacturing: precise manufacture and assembling, Fine Dressing, Color Matching, inspection and repair.
- Biological and medical: specimen-making, dissecting, Dyeing, Microscopy.
- Public Security System: Trace comparison, stamp and signature identification, bank note and other note identification and evidence analysis.

**Specification**

| Item                | Specification   | BS-3070A | BS-3070B | BS-3070C |
|---------------------|---|----------|----------|----------|
| Viewing Head        | 2× high quality optical head without eyepieces                                    | ●        | ●        | ●        |
| Objective           | 2×, WD: 208mm, FOV: 68mm  | ●        | ●        | ●        |
|                     | 4×, WD: 98mm, FOV: 34mm   | ●        | ●        | ●        |
|                     | 6×, WD: 80mm, FOV: 22.7mm   | ●        | ●        | ●        |
|                     | 8×, WD: 58mm, FOV: 17mm   | ○        | ○        | ○        |
|                     | 10×, WD: 46mm, FOV: 13.6mm  | ○        | ○        | ○        |
|                     | 15×, WD: 50mm, FOV: 9.1mm   | ○        | ○        | ○        |
|                     | 6×SL(Super Long working distance), WD: 115mm, FOV: 22.7mm                         | ○        | ○        | ○        |
| Total magnification | 4×-12×  | ●        | ●        | ●        |
| Illumination        | 3W built-in LED illumination with external control box                            | ●        | ●        | ●        |
| Stand               | Column height 500mm, moving range 175mm, Base 400×300×20mm                        | ●        |          |          |
|                     | Column height 580mm, moving range 330mm, Base 400×300×20mm, stage size: 210×190mm |          | ●        |          |
|                     | Universal stand can be fixed on table   |          |          | ●        |
| Focus               | Coarse focus with focus knob on stand   | ●        | ●        |          |
|                     | Focus with handle on head   |          |          | ●        |

Note: ● Standard Outfit, ○ Optional



## 17. BS-3080 Parallel Light Zoom Stereo Microscope



BS-3080

### Introduction

BS-3080 is a research level zoom stereo microscope with infinite parallel Galileo optical system. Based on Galileo optical system and Apochromatic objective, it can provide real and perfect microscopic images on details. The excellent ergonomics and user-friendly operating system can truly allow users to experience a simple and comfortable work. The Mirror in the base can be 360 ° rotatable to achieve the best observation results. BS-3080 can meet the research demands of life sciences, biomedicine, microelectronics, semiconductors, materials science and other fields of research needs.

### Feature

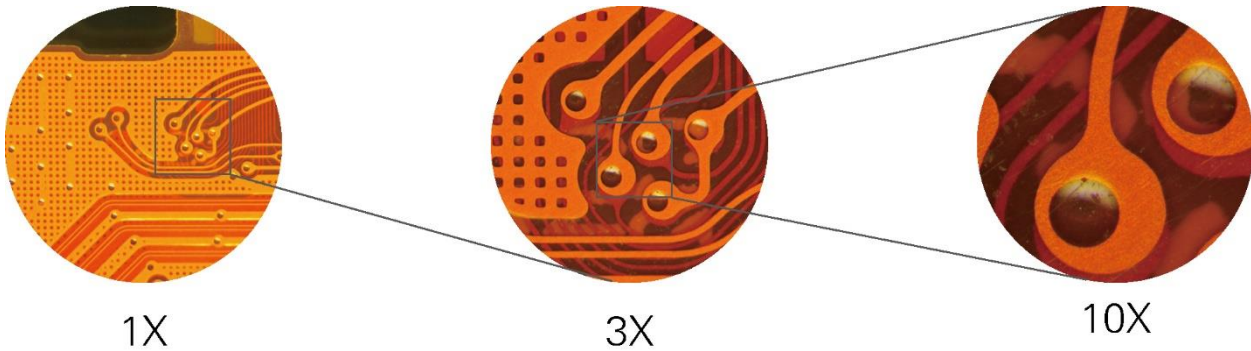
#### 1. Tilting viewing head for comfortable operation.

Tilting viewing head from 5 to 45 degrees, can be flexibly adjusted for different operators with different posture.

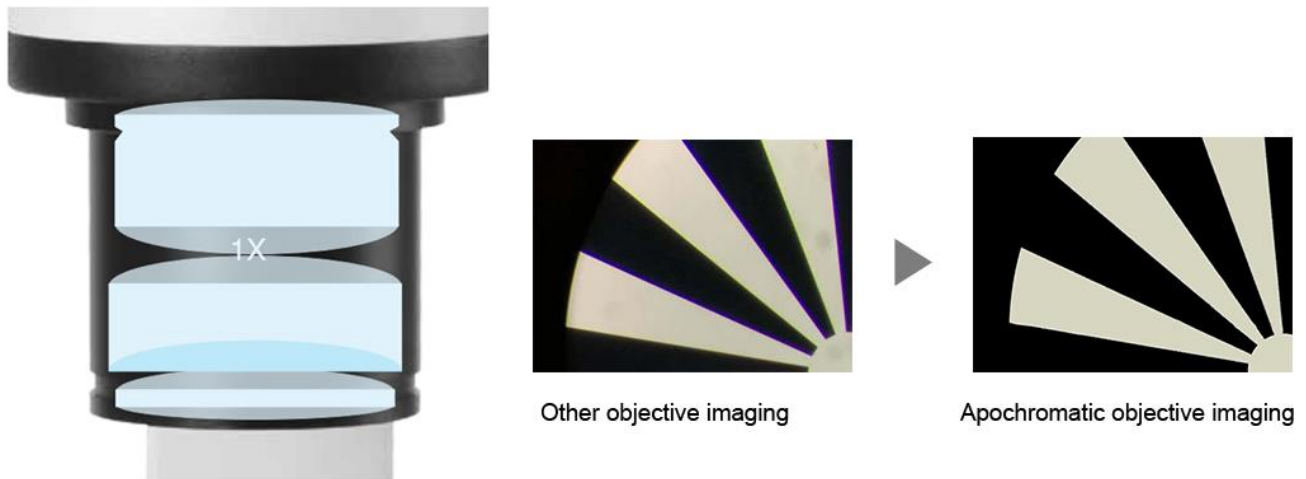


**2. Large zoom ratio 12.5:1.**

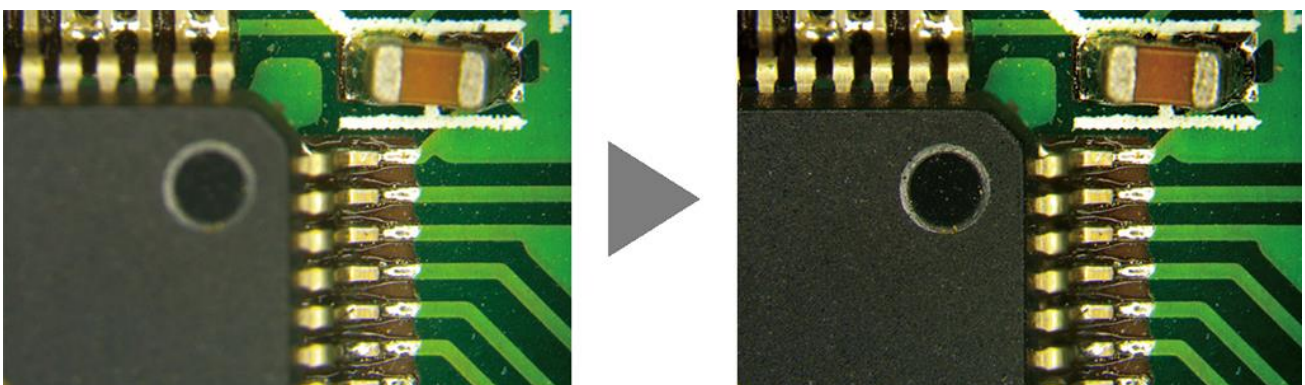
BS-3080 has large zoom ratio of 12.5:1, zoom range from 0.8X to 10X, with click stop for main magnifications, the images remain clear and smooth during zoom magnifying.

**3. Apochromatic objective.**

Apochromatic design has significantly improved the color reproduction of the objective. Correcting the axial chromatic aberration of red/green/blue/purple, and converge them on a focal plane, the objective is able to present the real color of the samples. 2X apochromatic objective is optional.

**4. Aperture diaphragm adjustment.**

Shift the aperture diaphragm lever in front of the microscope to adjust depth of field for high-quality image.

**Application**

BS-3080 has great value in a variety of applications such as life science and medical research, including dissection, IVF, biological experiment, chemical analysis and cell culture. It also can be used in Industrial areas for PCB, SMT

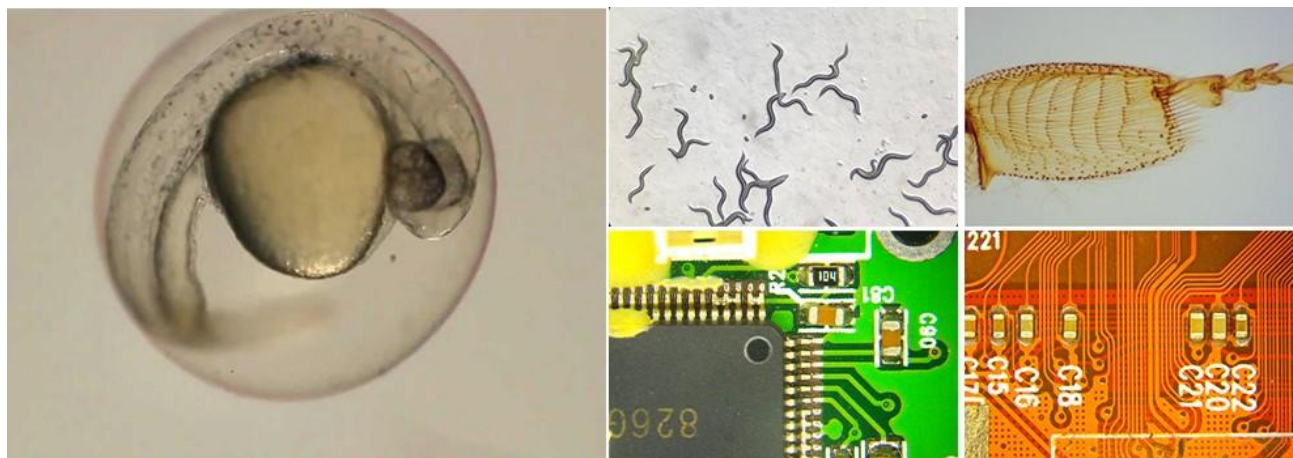
surface, electronics inspection, semiconductor chip inspection, metal and materials testing, precision parts testing. coin collecting, gemology and gemstone setting, engraving, repair and inspection of small parts.

## Specification

| Item           | Specification   | BS-3080 |
|----------------|---|---------|
| Optical System | Infinite Parallel Galileo Zoom Optical System   | ●       |
| Viewing Head   | Tilting trinocular viewing head, 5-45 degree adjustable; binocular: trinocular=100:0 or 0:100; interpupillary distance 50-76mm; fixed eyepiece tube with lock screw | ●       |
|                | 30 degree inclined trinocular head; binocular: trinocular=50: 50; interpupillary distance 50-76mm; fixed eyepiece tube with lock screw                              | ○       |
| Eyepiece       | High eye-point wide field plan eyepiece PL10×/23mm, diopter adjustable  | ●       |
|                | High eye-point wide field plan eyepiece PL15×/16mm, diopter adjustable  | ○       |
|                | High eye-point wide field plan eyepiece PL20×/12.5mm, diopter adjustable  | ○       |
| Zoom Range     | Zoom range: 0.8X-10X, click stop for 0.8×, 1×, 1.5×, 2×, 3×, 4×, 5×, 6×, 8×, 10×, with built-in aperture diaphragm  | ●       |
| Objective      | Plan Apochromatic Objective 1×, W.D.: 78mm  | ●       |
|                | Plan Apochromatic Objective 2×, W.D.: 20mm  | ○       |
| Zoom Ratio     | 1: 12.5   | ●       |
| Focusing Unit  | Coarse and fine coaxial focus system, integrated body with focus holder, coarse range: 50mm, fine precision 0.002mm   | ●       |
| Base           | Plan base with transmitted illumination (work with external 5W LED fiber); built-in 360 degree rotatable mirror, location and angle adjustable                      | ●       |
| Illumination   | 5W LED light box (size: 270×100×130mm) with single fiber (500mm), color temperature 5000-5500K; operating voltage 100-240VAC/50-60Hz, output 12V                    | ●       |
|                | LED Ring light  | ○       |
| Camera Adapter | 0.35×/0.5×/0.65×/1× C-mount adapters  | ○       |
| Packing        | 1set/carton, Net/Gross weight: 14/16kg, Carton size: 59×55×81cm   | ●       |

Note: ● Standard Outfit, ○ Optional

## Sample Image



## Accessories of Stereo Microscope

### 1. Halogen Cold Light Source

#### (1) BSL-150A Series Cold Light Illumination



#### Introduction

BSL-150A Series Cold Light Illumination is designed as an auxiliary lighting device for microscope in order to get better observation results.

#### Feature

1. More stable power supply with CE standard electrical parts.
2. With delay startup design to protect eyes and electrical parts from sudden brightness.
3. Enhancing the security with skillful power off switch.
4. Cooling the illumination better with advanced wind loop design.
5. Reliable with stable structure.
6. Longer working life and lower noisy.

#### Specification

| Item                           | Specification   | BSL-150A-1 | BSL-150A-2 | BSL-150A-O |
|--------------------------------|---|------------|------------|------------|
| Power Supplier                 | Switch Power 110V/ 220V   | ●          | ●          | ●          |
|                                | T-H Lamp with Reflector 20V/ 150W   |            |            |            |
|                                | Brightness Adjustable   |            |            |            |
|                                | Multi-coated IR Cutoff Filter for Heat Insulation                             |            |            |            |
|                                | Fan Cooling   |            |            |            |
|                                | Size: 260×120×150mm   |            |            |            |
|                                | Weight 3.3 kg   |            |            |            |
| Single Light Guide             | Rigid Flexional Tube, Length 500mm  | ●          |            |            |
| Dual Light Guide               | Rigid Flexional Tube, Length 500mm  |            | ●          |            |
| Ring Light Guide               | Flexible Tube, Length 1000mm, Adapter Ring Size $\Phi$ 50mm/ $\Phi$ 60mm      |            |            | ●          |
| Kohler Illumination Attachment | Attached on Single or Dual Light Guide to adjust and obtain Even Illumination | ○          | ○          |            |

Note: ● Standard Outfit, ○ Optional

## (2) BSL2-150A Cold Light Source



Single Rigid Fiber



Double Rigid Fiber



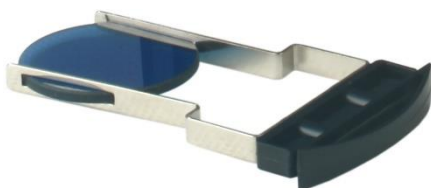
Ring Flexible Fiber

### Introduction

BSL2-150A Cold Light Source is designed as an auxiliary lighting device for stereo and other microscopes to get better observation results. The Cold light source provides high quality illumination, long working life and saves energy.

### Features

1. More stable power supply with CE standard electrical parts and circuit.
2. Reliable with stable structure.
3. Long working life and low noise.
4. Filter holder is available to change the color temperature from 3000K to 5000K.



**Specification**

| Item               | Specification  | BSL2-150A-1 | BSL2-150A-2 | BSL2-150A-O |
|--------------------|--|-------------|-------------|-------------|
| Power Supplier     | Input Voltage: 176V-265V, 50Hz (110V is optional)  | ●           | ●           | ●           |
|                    | 21V/150W, Philips Lamp (Lamp Model No.: 13629)   |             |             |             |
|                    | Lamp Life: 500 hours   |             |             |             |
|                    | Color temperature: 3000K   |             |             |             |
|                    | Illuminance: 100000Lx  |             |             |             |
|                    | Brightness Adjustable  |             |             |             |
|                    | Optical Fiber Interface: Φ16mm   |             |             |             |
|                    | Cooling: Built In Large-area Radiator and Cooling Fan  |             |             |             |
|                    | Size: 230mm×101.6mm×150mm  |             |             |             |
|                    | Gross Weight: 2.7 kgs (Optical Fiber not included)   |             |             |             |
|                    | Net Weight: 2.1 kgs (Optical Fiber not included)   |             |             |             |
| Single Light Guide | Single Rigid Fiber, length 550mm, diameter 8mm, with Condenser, 5/8" Standard Interface                  | ●           |             |             |
| Dual Light Guide   | Double Rigid Fiber, length 550mm, diameter 8mm, with Condenser, 5/8" Standard Interface                  |             | ●           |             |
| Ring Light Guide   | Ring Flexible Fiber, length 550mm, diameter 8mm, 5/8" Standard Interface, Adapter Ring Size Φ50mm/ Φ60mm |             |             | ●           |
| Filter Holder      | Used to change the color temperature   | ●           | ●           | ●           |
| Filter             | Light Blue   | ●           | ●           | ●           |
|                    | Navy Blue, Red, Green  | ○           | ○           | ○           |
| Package            | 1 set/carton, 285mm×230mm×255mm, 3kg   | ●           | ●           | ●           |
|                    | 4 sets/carton, 540mm*320mm*470mm, 12kg   | ●           | ●           | ●           |

Note: ● Standard Outfit, ○ Optional

## 2. LED Light Source

### (1) BSL-15A LED Light Source



Single Rigid Fiber



Double Rigid Fiber



Ring Flexible Fiber

### Introduction

BSL-15A LED Light Source is designed as an auxiliary lighting device for stereo and other microscopes to get better observation results. The LED light source provides high quality illumination, long working life and saves energy.

### Features

1. More stable power supply with CE standard electrical parts and circuit.
2. Reliable with stable structure.
3. Long working life and low noise.

### Specification

| Item           | Specification                        | BSL-15A-1 | BSL-15A-2 | BSL-15A-O |
|----------------|--------------------------------------|-----------|-----------|-----------|
| Power Supplier | Input Voltage: 100V-240V/ 50-60Hz    | •         | •         | •         |
|                | 15W LED light lamp                   |           |           |           |
|                | Lamp Life: 50000 hours               |           |           |           |
|                | The color temperature: 6000K         |           |           |           |
|                | Illuminance: 90000Lx                 |           |           |           |
|                | Brightness Adjustable                |           |           |           |
|                | Optical Fiber Interface: $\Phi$ 16mm |           |           |           |

|                    |  |   |   |   |
|--------------------|--|---|---|---|
|                    | Cooling: Built In Large-area Radiator and Cooling Fan  |   |   |   |
|                    | Size: 230mm×101.6mm×150mm  |   |   |   |
|                    | Gross Weight: 2.9 kgs (Optical Fiber not included)   |   |   |   |
|                    | Net Weight: 2.4 kgs (Optical Fiber not included)   |   |   |   |
| Single Light Guide | Single Rigid Fiber, length 550mm, diameter 8mm, with Condenser, 5/8" Standard Interface                  | ● |   |   |
| Dual Light Guide   | Double Rigid Fiber, length 550mm, diameter 8mm, with Condenser, 5/8" Standard Interface                  |   | ● |   |
| Ring Light Guide   | Ring Flexible Fiber, length 550mm, diameter 8mm, 5/8" Standard Interface, Adapter Ring Size Φ50mm/ Φ60mm |   |   | ● |
| Package            | 1 set/carton, 285mm×230mm×255mm, 3kg   | ● | ● | ● |
|                    | 4 sets/carton, 540mm*320mm*470mm, 12kg   | ● | ● | ● |

Note: ● Standard Outfit, ○ Optional

## (2) BSL-3A LED Light Source



BSL-3A is a popular goose neck LED illuminator. It adopts LED as the light source, it has features of low energy consumption and long working life. It is mainly used as an auxiliary lighting source for stereo microscopes or other microscopes.

### Feature

1. Illumination intensity is adjustable, Step-less dimming.
2. Easy change detachable Gooseneck light guide, angle can be adjusted.
3. Adopt high refractive index glass lens, high brightness.

### Specification

|                   |  |
|-------------------|--|
| LED Qty           | 2pcs LED lamps   |
| Power Consumption | 2*3W   |
| Input Voltage     | AC 100-240V, 50-60HZ   |
| Color Temperature | Standard is 6400K, other color temperature can be customized |



|                     |   |
|---------------------|---|
| Goose-neck Length   | 550mm   |
| Housing Material    | Steel metal casing  |
| Lumens              | ≈300lm  |
| Working life        | >10000 hours  |
| Working Temperature | ≤50°C   |
| Packing             | 1pc/carton, 31x30x18cm, 2kg; 3pcs/carton, 32 x 32 x 57cm, 6kg |

### (3) BSL-3B LED Light Source



BSL-3B is a popular goose neck LED illuminator. It adopts LED as the light source, it has features of low energy consumption and long working life. It is mainly used as an auxiliary lighting source for stereo microscopes or other microscopes.

#### Feature

1. Illumination intensity is adjustable, Step-less dimming.
2. Easy change detachable Gooseneck light guide, angle can be adjusted.
3. Adopt high refractive index glass lens, high brightness.

#### Specification

|                     |   |
|---------------------|---|
| LED Qty             | 2pcs LED lamps  |
| Power Consumption   | 6.5W  |
| Input Voltage       | AC 110-240V, 50-60HZ                                  |
| Color Temperature   | 6500K   |
| Goose-neck Length   | 400mm is standard, 500mm is optional                  |
| Housing Material    | Steel metal casing                                    |
| Illuminance         | 18000Lux (one light guide at 100mm working distance ) |
| Working life        | >10000 hours  |
| Working Temperature | ≤50°C   |
| Packing             | 4pcs/carton, 53 x 41 x 23cm, 8kg                      |

### 3. BAL-2, BAL-3 Fluorescent Ring Light



BAL-2B



BAL-2A/2C



BAL-3A



BAL-3B



BAL-3C

With high brightness and even illumination, simple structure and easy to operate, BAL-2, BAL-3 Series fluorescent ring light can be used as incident illumination for various stereo microscopes. The difference of BAL-2A and 2C is the lamp is different.

| Model             | BAL-2A              | BAL-2B | BAL-2C | BAL-3A | BAL-3B | BAL-3C           |
|-------------------|---------------------|--------|--------|--------|--------|------------------|
| Voltage           | 110V/220V           |        |        |        |        |                  |
| Power             | 8w                  |        |        | 10w    |        |                  |
| Color Temperature | 6400K-7000K         |        |        |        |        |                  |
| Mounting Diameter | Φ30-Φ60mm           |        |        |        |        |                  |
| Light adjustment  | No Light adjustment |        |        |        |        | Light adjustment |

## 4. LED Ring Light

### (1) BAL-8 LED Ring Light



With high brightness and even illumination, simple structure and easy to operate, BAL-8 LED ring light is used as incident illuminator for stereo microscopes.

Specification:

LED: 110V or 220V, 54 Pieces LED lamps,  $\Phi 30\text{-}\Phi 60\text{mm}$

### (2) BAL-72 LED Ring Light



### Application

BAL-72 LED ring light can be used as incident illumination on stereo microscopes and machine vision systems. It has four-zone lighting control separately, long working life and save energy features.

### Feature

1. Intensity Adjustment, Good Variable Control Permit Gradual Increase in Brightness with Four-zone Lighting Control Separately.
2. Reliability and Durability.
3. Low Power consumption, Super Brightness.
4. Metal Shell and ESD.
5. Reasonable Design, Uniformity Light, Non-flicker & Shadow.

### Specification

|              |             |
|--------------|-------------|
| LED Quantity | 72LED lamps |
|--------------|-------------|

|                   |  |
|-------------------|--|
| Mounting Diameter | Φ62mm  |
| Input Power       | DC12V 600mA  |
| Input Voltage     | Universal 100-240V AC  |
| Output Power      | 7.2W   |
| Color Temperature | 6500K  |
| LED Luminance     | > 15000mcd   |
| LED Lifetime      | 50,000 hours   |
| Working Distance  | 95-115mm   |
| Standard Set      | BAL-72 LED ring light, Light Control Box, DC12V Power Supply |

### (3) BAL-48 series LED Ring Light


**BAL-48A**

**BAL-48B**

**BAL-48C**

BAL-48 series LED ring light are high quality light source featuring high brightness, low temperature and flash free, they can be used as auxiliary illumination for industrial monocular microscopes, stereo microscopes and similar lens.

#### Specification

| Model               | BAL-48A   | BAL-48B   | BAL-48C   |
|---------------------|---|---|---|
| Input Voltage       | Universal 100-240V AC   | Universal 100-240V AC   | Universal 100-240V AC   |
| Output Voltage      | 12V/DC  | 12V/DC  | 12V/DC  |
| Current             | 240mA   | 240mA   | 240mA   |
| Mounting Diameter   | Φ40mm, Outer Diameter: Φ58mm                                  | Φ62mm, Outer Diameter: Φ100mm                                 | Φ62mm, Outer Diameter: Φ100mm                                 |
| LED Quantity        | 48pcs LED lamps   | 48pcs LED lamps   | 48pcs LED lamps   |
| LED Lifetime        | 100,000hrs  | 100,000hrs  | 100,000hrs  |
| LED Color           | White (Other Colors are Optional )                            | White (Other Colors are Optional )                            | White (Other Colors are Optional )                            |
| Color Temperature   | ±7000K  | ±7000K  | ±7000K  |
| Luminance           | 16000-18000mcd  | 16000-18000mcd  | 16000-18000mcd  |
| LED Angle           | 30° (Consistent)  | 30° (Consistent)  | 30° (Consistent)  |
| Working Distance    | 40-90mm   | 40-90mm   | 40-90mm   |
| Input Power         | 3 W   | 3 W   | 3 W   |
| Light Control       | Brightness Adjustment   | Brightness Adjustment   | Brightness Adjustment   |
| Light head material | Aluminum  | Plastic   | Aluminum  |
| Packing             | BAL-48A LED ring light, Light Control Box, DC12V Power Supply | BAL-48B LED ring light, Light Control Box, DC12V Power Supply | BAL-48C LED ring light, Light Control Box, DC12V Power Supply |

**(4) BAL-60A / 60B / 64 LED Ring Light**



BAL-60A



BAL-60B/72B



BAL-64

**Application**

BAL-60A/60B/72B/64 LED ring light are simple and compact, they can be used as incident illumination on stereo microscopes and machine vision systems. BAL-60B has four-zone lighting control separately, these LED ring lights have long working life and save energy features.

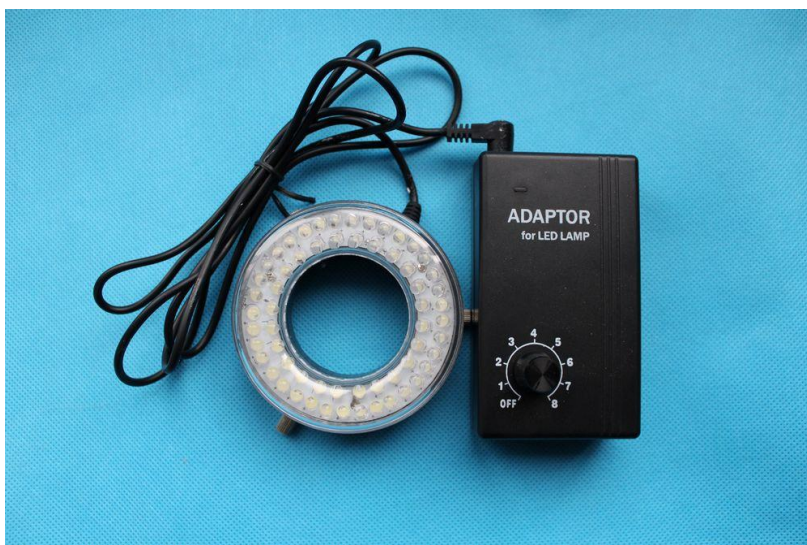
**Feature**

1. Light intensity can be adjusted to get best contrast.
2. BAL-60B has Four-zone lighting control separately to enhance contrast and reduce reflection.
3. Reliability and Durability.
4. Low Power consumption, Super Brightness.
5. Reasonable Design, Uniformity Light, Non-flicker & Shadow.

**Specification**

| Model               | BAL-60A                                    | BAL-60B/72B                                    | BAL-64                                     |
|---------------------|--|--|--|
| LED Quantity        | 60 LED lamps                               | 60/72 LED lamps                                | 64 LED lamps                               |
| Color               | Black                                      | Black  | White                                      |
| Mounting Diameter   | Φ60mm                                      | Φ60mm  | Φ60mm                                      |
| Light Head Material | Plastic                                    | Aluminum                                       | Plastic                                    |
| Input Power         | DC12V                                      | DC12V  | DC12V                                      |
| Input Voltage       | Universal 100-240V AC                      | Universal 100-240V AC                          | Universal 100-240V AC                      |
| Color Temperature   | 6500K-7000K                                | 6000K-6500K                                    | 6500K-7000K                                |
| LED Luminance       | 0-12000 Lux                                | 0-16000 Lux                                    | 0-12000 Lux                                |
| LED Lifetime        | 50,000 hours                               | 50,000 hours                                   | 50,000 hours                               |
| Brightness          | 0-100% adjustable                          | 0-100% adjustable, 4 zone control separately   | 0-100% adjustable                          |
| Working Distance    | 30-120mm                                   | 60-120mm                                       | 30-120mm                                   |
| Standard Set        | BAL-60A LED ring light, DC12V Power Supply | BAL-60B/72B LED ring light, DC12V Power Supply | BAL-60B LED ring light, DC12V Power Supply |

### (5) BAL2A Series LED Ring Light



BAL2A-60/78

BAL2A series LED ring light have features of high brightness, low temperature and flash free, they can be used as auxiliary illumination for industrial monocular microscopes, stereo microscopes and similar lens.

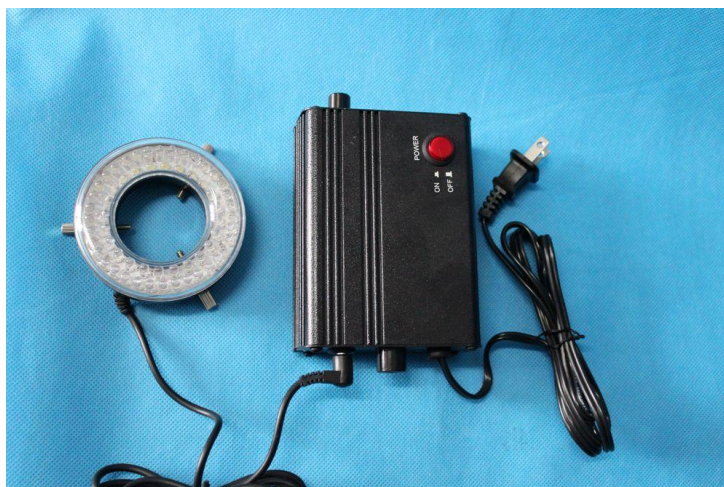
#### Feature

1. The power controlling adapter and light head adopt ABS plastic material, simple and smart.
2. Adopt  $\phi 5\text{mm}$  LED lamps, with excellent light focus effect and high efficiency.
3. Continues light intensity adjustment can meet different requirement.
4. Reliable circuit board ensures safety and long working life.
5. ESD treatment is optional.

#### Specification

| Model               | BAL2A-60   | BAL2A-78   |
|---------------------|--|--|
| Input Voltage       | Universal 100-240V AC  | Universal 100-240V AC  |
| Input Power         | 6 W  | 7 W  |
| Mounting Diameter   | $\phi 60\text{mm}$   | $\phi 70\text{mm}$   |
| LED Quantity        | 60pcs LED lamps  | 78pcs LED lamps  |
| LED Lifetime        | 50,000hrs  | 50,000hrs  |
| LED Color           | White (Other Colors can be customized )                      | White (Other Colors can be customized )                      |
| Color Temperature   | 6400K, other color temperature can be customized             | 6400K, other color temperature can be customized             |
| Illuminance@100mm   | 24000lx  | 24000lx  |
| Light Control       | Brightness Adjustable  | Brightness Adjustable  |
| Light head material | ABS Plastic  | ABS Plastic  |
| Packing             | BAL2A-60 LED ring light head, Light Control Box, Power cable | BAL2A-78 LED ring light head, Light Control Box, Power cable |

### (6) BAL2B Series LED Ring Light



BAL2B-60/78

BAL2B series LED ring light have features of high brightness, low temperature and flash free, they can be used as auxiliary illumination for industrial monocular microscopes, stereo microscopes and similar lens.

#### Feature

1. The light head adopt ABS plastic material and  $\phi 5\text{mm}$  LED lamps, with excellent light focus effect and high efficiency.
2. The power controlling adapter adopt aluminum case, solid and reliable.
3. Continues light intensity adjustment can meet different requirement.
4. Reliable circuit board ensures safety and long working life.
5. ESD light head treatment is optional.

#### Specification

| Model               | BAL2B-60  | BAL2B-78  |
|---------------------|---|---|
| Input Voltage       | Universal 100-240V AC   | Universal 100-240V AC   |
| Input Power         | 5 W   | 6 W   |
| Mounting Diameter   | $\phi 61\text{mm}$  | $\phi 70\text{mm}$  |
| LED Quantity        | 60pcs LED lamps   | 78pcs LED lamps   |
| LED Lifetime        | 50,000hrs   | 50,000hrs   |
| LED Color           | White (Other Colors can be customized )                               | White (Other Colors can be customized )                               |
| Color Temperature   | 6400K, other color temperature can be customized                      | 6400K, other color temperature can be customized                      |
| Illuminance@100mm   | 24000lx   | 25000lx   |
| Light Control       | Brightness Adjustable   | Brightness Adjustable   |
| Light head material | ABS Plastic   | ABS Plastic   |
| Packing             | BAL2B-60 LED ring light head, Aluminum Light Control Box, Power cable | BAL2B-78 LED ring light head, Aluminum Light Control Box, Power cable |

### (7) BAL2B-78P Polarizing LED ring light



BAL2B-78P

BAL2B-78P Polarizing LED ring light has features of high brightness, low temperature and flash free, it can be used as auxiliary illumination for industrial monocular microscopes, stereo microscopes and similar lens. It adopts a high extinction ratio polarizing set, can be used to observe or analyse surface of high reflective materials.

#### Feature

1. The light head adopt ABS plastic material and  $\phi 5\text{mm}$  LED lamps, with excellent light focus effect and high efficiency.
2. The power controlling adapter adopt aluminum case, solid and reliable.
3. With polarizing set, can reduce the reflective light on the surface of materials, improve the observation result.
4. Continues light intensity adjustment can meet different requirement.
5. Reliable circuit board ensures safety and long working life.
6. ESD light head treatment is optional.

#### Specification

|                                |  |
|--------------------------------|--|
| Model                          | BAL2B-78P  |
| Input Voltage                  | Universal 100-240V AC                            |
| Input Power                    | 6 W  |
| Mounting Diameter              | $\phi 70\text{mm}$                               |
| Outside Diameter of light head | $\phi 104\text{mm}$                              |
| LED Quantity                   | 78pcs LED lamps                                  |
| LED Lifetime                   | 50,000hrs  |
| LED Color                      | White (Other Colors can be customized )          |
| Color Temperature              | 6400K, other color temperature can be customized |



|                     |   |
|---------------------|---|
| Illuminance@100mm   | 25000lx   |
| Light Control       | Brightness Adjustable   |
| Light head material | ABS Plastic   |
| Polarizing Set      | Polarizer and Analyzer (Polarizer is 360°adjustable)                                  |
| Packing             | BAL2B-78 LED ring light head, Aluminum Light Control Box, Power cable, Polarizing set |

### 5. Stand and other accessories



|  |  |   |
|--|--|---|
| <b>BSZ-F1 Stand</b>  | <b>BSZ-F2 Stand</b>  | <b>BSZ-F3 Stand</b>   |
| Column height: 400mm, $\Phi$ 38mm<br>Column for focus Arm: $\Phi$ 30mm | Column height: 454mm, $\Phi$ 29.5mm<br>Base size: 396*276mm<br>Column for focus Arm: $\Phi$ 30mm | Column height: 490mm, $\Phi$ 38mm<br>Base size: 253*253mm<br>Cross bar length: 446mm<br>Column for focus Arm: $\Phi$ 30mm |



|                                   |  |  |
|-----------------------------------|--|--|
| <b>BSZ-F4 Stand</b>               | <b>BSZ-F9 Stand</b>  | <b>BSZ-F10 Stand</b>   |
| Column for focus Arm: $\Phi$ 30mm | Column height: 280mm<br>Glass plate: $\Phi$ 100mm<br>Microscope mount: $\Phi$ 76mm | Column height: 280mm<br>Glass plate: $\Phi$ 140mm<br>Microscope mount: $\Phi$ 76mm |



|  |  |  |
|--|--|--|
| <b>BSZ-F11 Stand</b>   | <b>BSZ-F12 Stand</b>   | <b>BSZ-F13 Stand</b>   |
| Column height: 280mm<br>Glass plate: $\Phi$ 100mm<br>Microscope mount: $\Phi$ 76mm | Halogen incident and transmitted illumination<br>Microscope mount: $\Phi$ 76mm | Clamp Size: 103*77*115mm<br>Max. Table thickness: 52mm<br>Length of Horizontal Arm: 507mm<br>Microscope mount: $\Phi$ 76/ $\Phi$ 40/ $\Phi$ 45mm |



|   |  |   |
|---|--|---|
| <p align="center"><b>BSZ-F14 Stand</b></p> <p>Base Size: 382*260*24mm<br/>         Column height: 408mm, <math>\Phi</math>32mm<br/>         Microscope mount: <math>\Phi</math>76/<math>\Phi</math>40/<math>\Phi</math>45mm</p> | <p align="center"><b>BSZ-F15 Stand</b></p> <p>Base Size: 382*260*24mm<br/>         Column height: 408mm, <math>\Phi</math>32mm<br/>         Cross bar Length: 408mm<br/>         Microscope mount: <math>\Phi</math>76/<math>\Phi</math>40/<math>\Phi</math>45mm</p> | <p align="center"><b>BSZ-F16 Stand</b></p> <p>Base Size: 318*308*16mm<br/>         Column height: 326mm<br/>         Focusing Range: 160mm<br/>         Microscope mount: <math>\Phi</math>76/<math>\Phi</math>40/<math>\Phi</math>45mm</p> |
|---|--|---|



|   |   |  |
|---|---|--|
| <p align="center"><b>BSZ-F17 Stand</b></p> <p>Base Size: 318*308*16mm<br/>         Column height: 326mm<br/>         Focusing Range: 160mm<br/>         Microscope Arm: <math>\Phi</math>76/<math>\Phi</math>40/<math>\Phi</math>45mm</p> | <p align="center"><b>BSZ-F18 Stand</b></p> <p>Base Size: 318*308*16mm<br/>         Column height: 500mm<br/>         Focusing Range: 160mm<br/>         Microscope Arm: <math>\Phi</math>76/<math>\Phi</math>40/<math>\Phi</math>45mm</p> | <p align="center"><b>BSZ-F19 Stand(For Camera)</b></p> <p>Base Size: 318*308*16mm<br/>         Column height: 326mm<br/>         Focusing Range: 160mm</p> |
|---|---|--|



|  |   |  |
|--|---|--|
| <p align="center"><b>BMS-302 X-Y Stage</b></p> <p>Stage Size: 180×155×26mm,<br/>         Moving Rang: X-75mm, Y-55mm,<br/>         Accuracy: 0.1mm</p> | <p align="center"><b>BMS-304 X-Y Stage</b></p> <p>Stage size: 254×203×25mm,<br/>         Moving Range: 100mm×100mm,<br/>         Glass Stage: <math>\Phi</math> 140mm</p> | <p align="center"><b>BMS-311 Measuring Stage</b></p> <p>Stage Size: 160×123×21mm,<br/>         Moving Rang: X-75mm, Y-50mm, Accuracy:<br/>         0.1mm</p> |
|--|---|--|