

BS-3060 Zoom Stereo Microscope



BS-3060A/B/C



BS-3060AT/BT/CT



BS-3060 with coaxial episcopic illuminator

Introduction

Stereo microscopes are also known as low magnification and dissecting microscopes. BS-3060 Series Zoom Stereo Microscope with Infinity Parallel Optical System on a post stand offers upright, un-reversed 3-D images that remain in focus throughout the zoom range. Optional eyepieces and auxiliary objectives expand magnification range and working distances.

This is a high level stereo microscope. Optional cold light and ring light can be chosen for this microscope. You can also choose trinocular head to add digital camera with the appropriate camera adapter. In summary BS-3060 series Parallel Stereo Microscopes give the greatest range of magnifications, working distances, photo options, accessories and are the most convenient to use – no wonder they are popular!

Feature

1. Excellent Image Quality & Optical Performance with Infinity Parallel Optical System.
2. Comfortable Operation with Ergonomic Design Principle.
3. With LED light for both incident and transmitted illumination, Providing even illumination and life expectancy can reach 6000 hours.
4. A Wide Range of Accessories to be Equipped with the Microscope for Multi-purpose. It is an Outstanding Assistant in Industrial, Medical and Scientific Research Areas.

Application

BS-3060 series stereo zoom microscopes with Infinity Parallel Optical System is of great value in a variety of applications such as Industrial, Medical and Scientific Research Areas, circuit board repair, circuit board inspection, surface mount technology work, electronics inspection, coin collecting, gemology and gemstone setting, engraving, and repair and inspection of small parts.

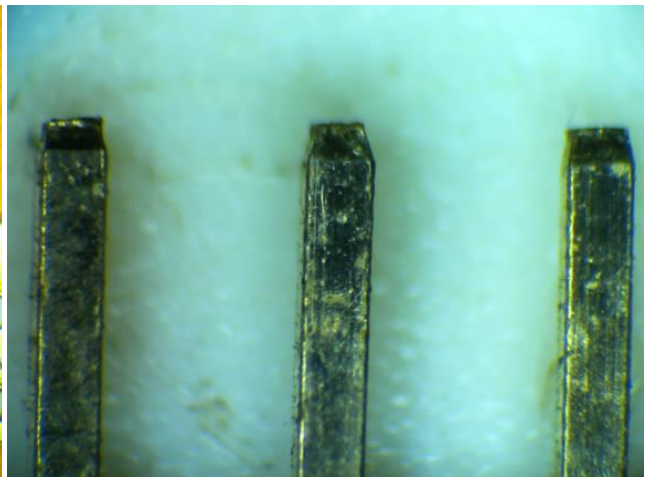
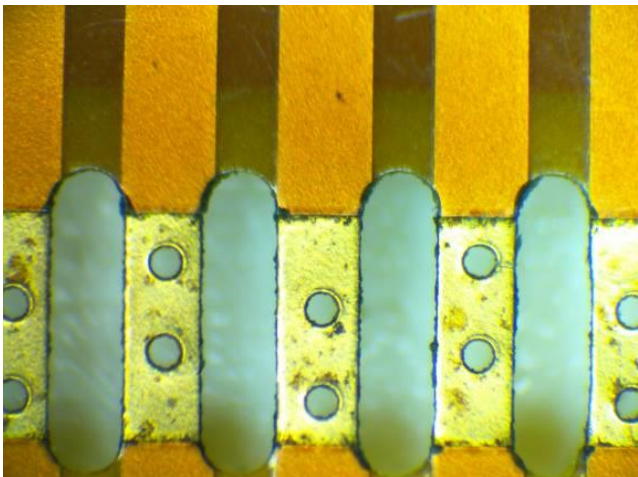
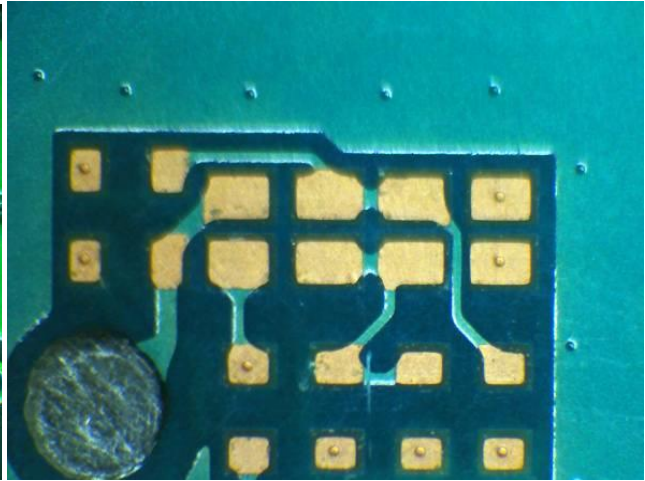
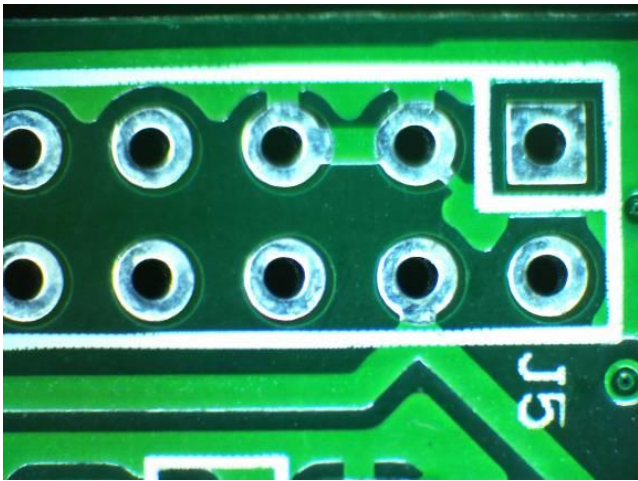
Specification

Item	Specification	BS-3060A	BS-3060B	BS-3060C
Optical System	Infinite Parallel Zoom Optical System	●	●	●
Viewing Head	Binocular Head, 20°Inclination, Interpupillary Distance 55-75mm	●	●	●
	Tilting Binocular Eyepiece Tube, 5°-35° Inclined, Interpupillary Distance 55-75mm	○	○	○
Eyepiece	EW10×/Φ22mm	●	●	●
	EW10×/Φ24mm	○	○	○
	WF15×/Φ16mm	○	○	○
	WF20×/Φ12mm	○	○	○
	WF30×/Φ8mm	○	○	○
Zoom Objective	0.8×-5×	●		
	0.8×-6.4×		●	
	0.8×-8×			●
Objective	Plan Achromatic Objective 1×, W.D.: 78mm	●	●	●
	Achromatic Objective 0.3×, W.D.: 276mm	○	○	○
	Achromatic Objective 0.5×, W.D.: 195mm	○	○	○
	Plan Apochromatic Objective 0.5×, W.D.: 126mm	○	○	○
	Plan Achromatic Objective 2×, W.D.: 32.5mm	○	○	○
Zoom Ratio	1: 6	●		
	1: 8		●	
	1: 10			●
Focusing Unit	Coarse Focus Knob with tension adjustable, Moving range 105mm	●	●	○
	Coaxial Coarse & Fine Focus Knob with tension adjustable, Moving range 105mm	○	○	●
Illumination	Transmission & Reflection LED Illumination, Brightness Adjustable	●	●	●
Optional Accessories	Coaxial Illumination	○	○	○
	Epi-Fluorescent Attachment	○	○	○
	Dark Field Attachment	○	○	○
	Simple Polarization Set	○	○	○
	Iris Diaphragm	○	○	○
	Beam splitter (one port)	○	○	○
	Beam splitter (two ports)	○	○	○
	Photography & video attachment	○	○	○
	Moveable Stage	○	○	○
	Temperature controlled Stage	○	○	○
	Universal Table Stand/Table Clamp Stand	○	○	○
	Cold light illumination with dual light guide	○	○	○
	LCD Attachment	○	○	○

Package	1pc/carton, 49cm*40cm*56cm, 9.5kg	•	•	•
---------	-----------------------------------	---	---	---

Note: ● Standard Outfit, ○ Optional

Sample Image



System Diagram

