

BS-3060MH4 Dual Head Zoom Stereo Teaching Microscope



BS-3060MH4A/B/C

Introduction

BS-3060MH4 Series Dual Viewing Head Zoom Stereo Teaching Microscopes with Infinity Parallel Optical System on a heavy stand offers upright, un-reversed 3D images that remain in focus throughout the zoom range. Optional eyepieces and auxiliary objectives are available to expand magnification range and working distances.

Optional cold light and ring light are available for this microscope. You can also choose beam splitter to add digital camera with the appropriate camera adapter. BS-3060MH4 series dual viewing head parallel stereo microscopes give the greatest range of magnifications, working distances, photo options, various accessories and are the most convenient to use.

It is an outstanding assistant in Industrial, Medical and Scientific Research areas.

Feature

1. Excellent Image Quality & Optical Performance with Infinity Galilean Parallel Optical System.
2. Comfortable Operation with Ergonomic Design Principle.
3. Can apply for double people observations of the same specimen simultaneously, eliminate the defects of digital teaching.
4. The built-in dual color(red and green) pointer can be switched as request, convenient for teaching.

Application

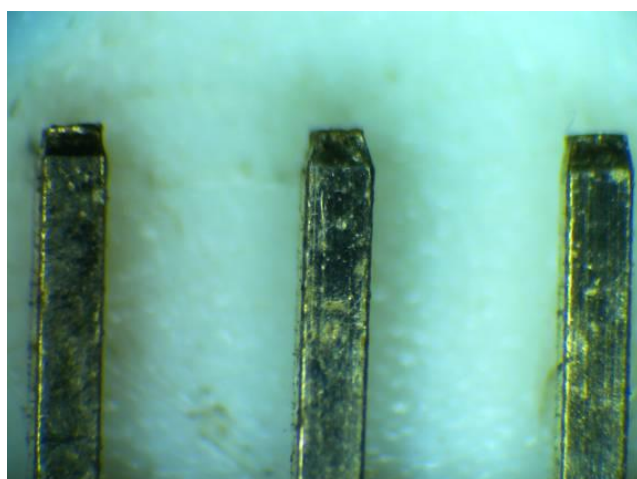
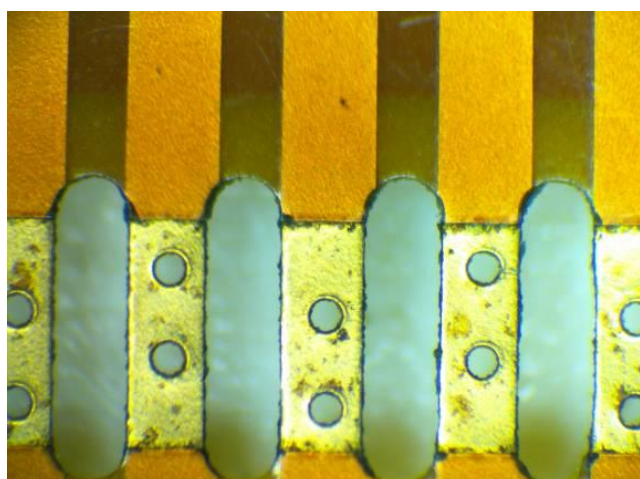
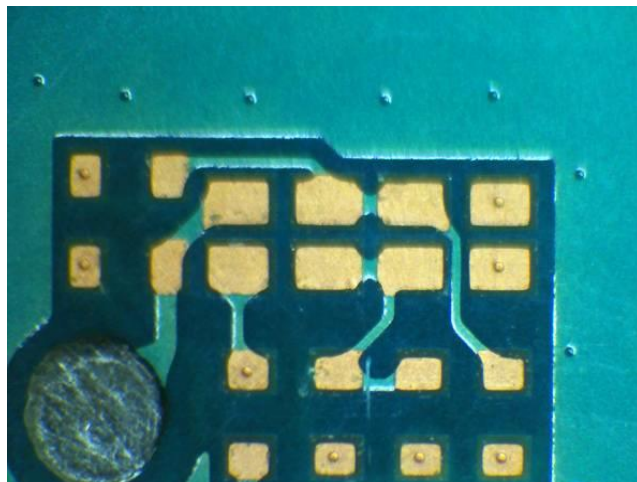
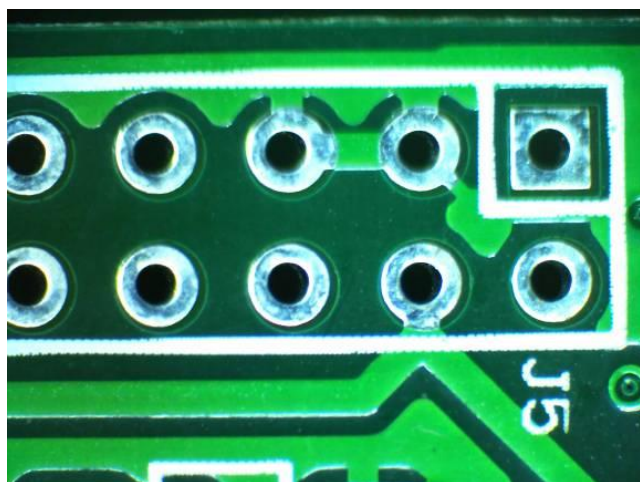
BS-3060MH4 series dual viewing head zoom stereo teaching microscopes with Infinity Galilean Parallel Optical System are of great value in a variety of applications such as Industrial, Medical and Scientific Research areas, especially surgical practice of dental, Neurological, orthopedics and ophthalmological, etc. These microscopes also can be used in teaching of very precise and delicate operation under microscopes, like watch assemble.

Specification

Item	Specification	BS-3060M H4A	BS-3060M H4B	BS-3060MH 4C
Optical System	Infinite Parallel Zoom Optical System	●	●	●
Viewing Head	Binocular Head, 20°Inclination, Interpupillary Distance 55-75mm	●	●	●
	Tilting Binocular Eyepiece Tube, 0°-35° Inclined, Interpupillary Distance 55-75mm	○	○	○
Eyepiece	EW10×/Φ22mm	●	●	●
	WF15×/Φ16mm	○	○	○
	WF20×/Φ12mm	○	○	○
Pointer	Red and Green LED pointer	●	●	●
Zoom Objective	0.8×-5×	●		
	0.8×-6.4×		●	
	0.8×-8×			●
Objective	Plan Achromatic Objective 1×, W.D.: 78mm	●	●	●
	Achromatic Objective 0.3×, W.D.: 276mm	○	○	○
	Achromatic Objective 0.5×, W.D.: 195mm	○	○	○
	Plan Apochromatic Objective 0.5×, W.D.: 126mm	○	○	○
	Plan Achromatic Objective 2×, W.D.: 32.5mm	○	○	○
Zoom Ratio	1: 6	●		
	1: 8		●	
	1: 10			●
Focusing Unit	Coarse Focus Knob with tension adjustable, Moving range 215mm	●	●	●
Illumination	Right light(LED/fluorescent)	●	●	●
Base Size	420x350mm	●	●	●
Toughened Glass Stage	250x250mm	●	●	●
Optional Accessories	Coaxial Illumination	○	○	○
	Epi-Fluorescent Attachment	○	○	○
	Iris Diaphragm	○	○	○
	Beam splitter (one port)	○	○	○
	Beam splitter (two ports)	○	○	○
	Photography & video attachment	○	○	○
	Moveable Stage	○	○	○
	Temperature controlled Stage	○	○	○
	Cold light illumination with dual light guide	○	○	○
	Stage micrometer	○	○	○

Note: ● Standard Outfit, ○ Optional

Sample Image



Dimension

