

BS-7000 Series Laboratory Fluorescent Microscope

1. BS-7000A Upright Fluorescent Biological Microscope	2
2. BS-7000B Inverted Fluorescent Biological Microscope	6
3. BS-7020 Inverted Fluorescent Biological Microscope	10

1. BS-7000A Upright Fluorescent Biological Microscope



Introduction

BS-7000A fluorescence microscope is a laboratory fluorescent microscope with perfect infinite optical system. The microscope uses mercury lamp as the light source, the fluorescent attachment has 6 positions for filter blocks, which allows easy change of filter blocks for various fluorochrome.

Feature

1. Perfect image with infinite optical system.
2. High resolution fluorescent objectives are optional for excellent fluorescent images.
3. Advanced and precision lamp housing reduces the light leak.
4. Reliable power supply with digital display and timer.

Application

BS-7000A Fluorescence microscope is used to study the absorbing, transportation, chemicals distribution and positioning in cells. It is widely used in universities, hospitals and life science labs for disease examination, immune diagnosis and scientific research.

Specification

Item	Specification	BS-7000A
Optical System	Infinite Optical System	•
Viewing Head	Seidentopf Trinocular Head, Inclined at 30°, Interpupillary Distance 48-75mm	•

Eyepiece	Extra Wide Field Eyepiece EW10×/22mm, Eyepiece tube diameter 30mm			●	
Nosepiece	Backward Quintuple Nosepiece			●	
	Backward Sextuple Nosepiece			○	
Objective	Infinite Plan Achromatic Objective	2×/0.05,	W.D.=18.3mm	○	
		4×/0.10,	W.D.=17.3mm	●	
		10×/0.25,	W.D.=10mm	●	
		20×/0.40,	W.D.=5.1mm	○	
		40×/0.65(S),	W.D.=0.54mm	●	
		60×/0.8(S),	W.D.=0.14mm	○	
		100×/1.25(S, Oil),	W.D.=0.13mm	●	
	Infinite Plan Fluorescent Objective	4×/0.13,	W.D.=16.3mm	○	
		10×/0.30,	W.D.=12.4mm	○	
		20×/0.50,	W.D.=1.5mm	○	
40×/0.75(S),		W.D.=0.35mm	○		
100×/1.3(S, Oil),		W.D.=0.13mm	○		
Condenser	Swing Condenser NA 0.9/ 0.25			●	
Focusing	Coaxial Coarse and Fine Adjustment, Fine Division 0.001mm, Coarse Stroke 37.7mm per Rotation, Fine Stroke 0.1mm per Rotation, Moving Range 24mm			●	
Stage	Double Layers Mechanical Stage 185×142mm, Moving Range 75×55mm			●	
Photo Adapter	Used to connect Nikon or Canon DSLR camera to the microscope			○	
Video Adapter	1× or 0.5× C-mount adapter			○	
Transmitted Kohler Illumination	External Illumination, Aspherical Collector with Kohler Illumination, Halogen Lamp 6V/30W, Brightness Adjustable			●	
	External Illumination, Aspherical Collector with Kohler Illumination, Halogen Lamp 24V/100W, Brightness Adjustable			○	
	3W LED Illumination, Brightness Adjustable			○	
	5W LED Illumination, Brightness Adjustable			○	
Reflected Light Source		Excitation	Dichroic Mirror	Barrier Filter	
	Blue Excitation	BP460~490	DM500	BA520	●
	Blue Excitation(B1)	BP460~495	DM505	BA510-550	○
	Green Excitation	BP510~550	DM570	BA590	●
	Ultraviolet Excitation	BP330~385	DM400	BA420	○
	Violet Excitation	BP400~410	DM455	BA455	○
	Red Excitation	BP620~650	DM660	BA670-750	○
Lamp	100W HBO Ultra Hi-voltage Spherical Mercury Lamp			●	
Protection barrier	Barrier to Resist the Ultraviolet Light			●	
Power Supplier	Power Supplier NFP-1, 220V/ 110V Voltage Interchangeable, Digital Display			●	
Immersion Oil	Fluorescent Free Oil			●	
Filter	Neutral ND25/ ND6 Filter			○	
Centering Target				○	

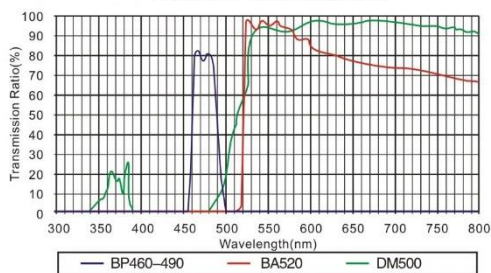
Note: ●Standard Outfit, ○Optional

Epi-fluorescent Attachment

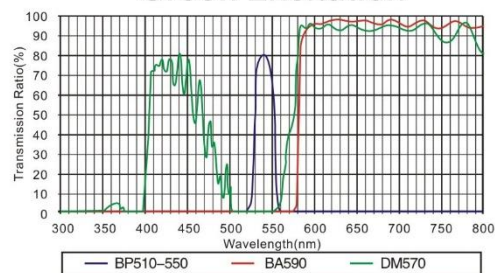


Characteristics of Mirror Units Wavelength

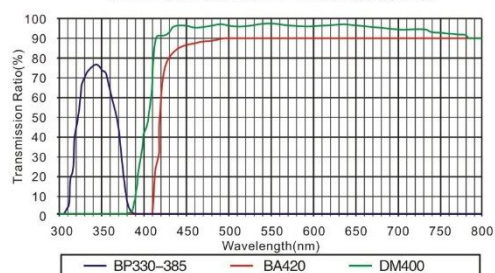
Blue Excitation



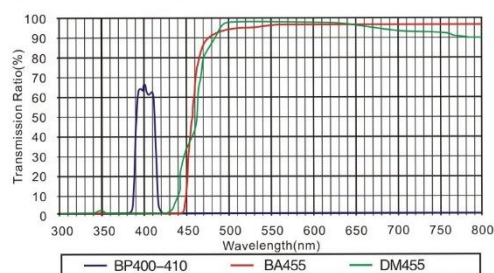
Green Excitation



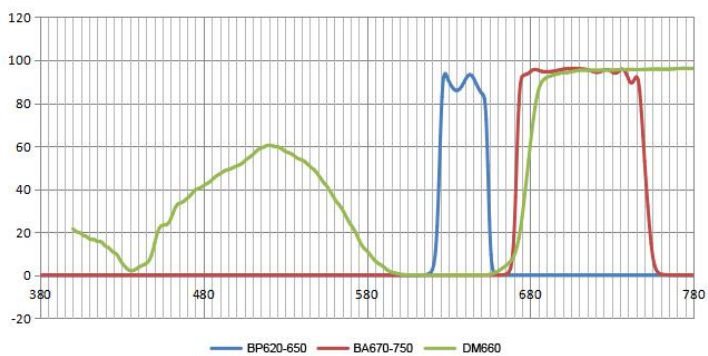
Ultraviolet Excitation



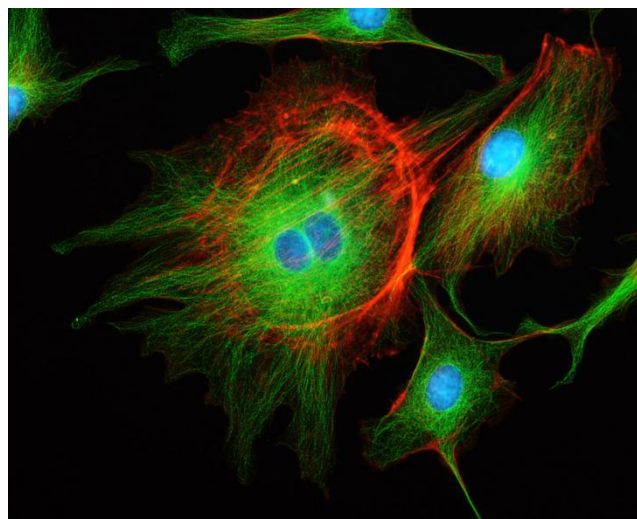
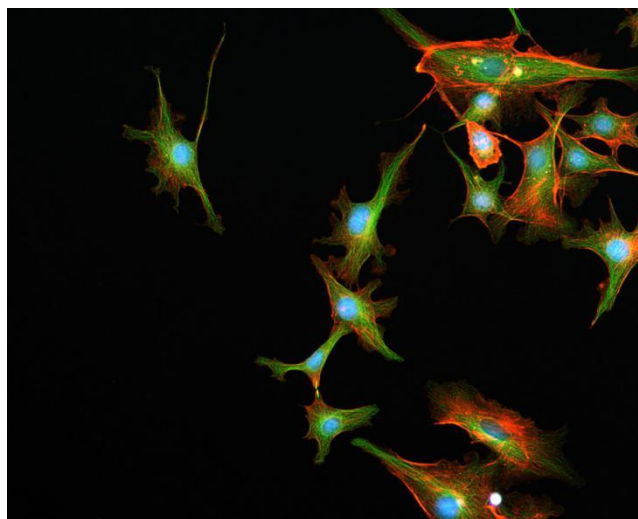
Violet Excitation



Red Excitation



Sample Image



2. BS-7000B Inverted Fluorescent Biological Microscope



Introduction

BS-7000B Inverted Fluorescent Biological Microscope is specifically designed for the observation of cell culture. Infinite Optical System gives excellent Optical performance. Excellent high resolution fluorescent objectives are optional to generate high quality fluorescent images. This microscope can be your best assistant in laboratory research.

Feature

1. Perfect image with infinite optical system.
2. High resolution fluorescent objectives are optional for excellent fluorescent images.
3. Advanced and precision lamp housing reduces the light leak.
4. Reliable power supply with digital display and timer.
5. Innovative structure and sharp Image is perfect for viewing cell tissue.

Application

BS-7000B Inverted Fluorescent Biological Microscope is specifically designed for the observation of cell culture. It is widely used in universities, hospitals and life science labs for disease examination, immune diagnosis and scientific research.

Specification

Item	Specification		BS-7000B
Optical System	Infinite Optical System		●
Viewing Head	Seidentopf Trinocular Head Inclined at 30°, Interpupillary 48-75mm		●
Eyepiece	High-point, Extra Wide Field Eyepiece EW10×/ 22		●
Nosepiece	Quintuple Nosepiece		●
Objective	LWD Infinite Plan	4×/0.1, W.D.= 17.3mm	●
	Objective	10×/0.25, W.D.= 10mm	○

		20×/0.4, W.D.= 5.1mm	○		
		40×/0.6, W.D.= 2.1mm	●		
	Infinite Plan Phase Objective	PH 10×/0.25, W.D.= 10mm	●		
		PH 20×/0.4, W.D.= 5.1mm	●		
		PH 40×/0.6, W.D.= 2.1mm	○		
	Infinite Plan Fluorescent Objective	4×/0.13, W.D.= 16.3mm	○		
		10×/0.30, W.D.= 12.4mm	○		
		20×/0.5, W.D.= 1.5mm	○		
40×/0.6, W.D.= 2.2mm		○			
Condenser	ELWD Condenser NA 0.3, LWD 72mm (Without condenser 150mm)		●		
Telescope	Centering Telescope(Φ30)		○		
Phase Annulus	10×-20×, 40× Phase Annulus Plate (Fixed)		●		
	10×-20×, 40× Phase Annulus Plate (Adjustable)		○		
Stage	Plain stage 160×250 mm		●		
	Glass Insert Plate		●		
	Attachable Mechanical Stage, X- Y Coaxial Control, Moving Range 120×78 mm		○		
	Auxiliary Stage 70×180mm		●		
	Terasaki Holder		○		
	Petri Dish Holder Φ35mm		○		
	Slide Glass Holder Φ54mm		○		
	Petri Dish Holder Φ90mm		○		
Focusing	Coaxial Coarse and Fine Adjustment, Fine Division 0.002mm, Coarse Stroke 37.7mm/Rotation, Fine Stroke 0.2mm/Rotation, Moving Range up 8mm, down 3mm		●		
Transmitted Illumination	6V/30W Halogen Lamp		●		
	3W LED lamp		○		
Filter	Blue, Green and Ground glass filters, Diameter 45mm		●		
Photo Attachment	Photo Adapter for Nikon and Canon DSLR cameras		○		
Video Adapter	Video Adapter 1× / 0.5× C-mount		○		
Reflected Light Source		Excitation	Dichroic Mirror	Barrier Filter	
	Blue Excitation	BP460~490	DM500	BA520	●
	Blue Excitation (B1)	BP460~495	DM505	BA510-550	○
	Green Excitation	BP480~550	DM570	BA590	●
	Ultraviolet Excitation	BP330~385	DM400	BA420	○
	Violet Excitation	BP400~410	DM455	BA455	○
	Red Excitation	BP620~650	DM660	BA670-750	○
Lamp	100W HBO Ultra Hi-voltage Spherical Mercury Lamp			●	
Protection barrier	Barrier to Resist the Ultraviolet Light			●	
Power Supplier	Power Supplier NFP-1, 220V/ 110V Voltage interchangeable, Digital Display			●	
Immersion Oil	Fluorescent Free Oil			●	
Filter	Neutral ND25/ ND6 Filter			○	
Centering Target				○	

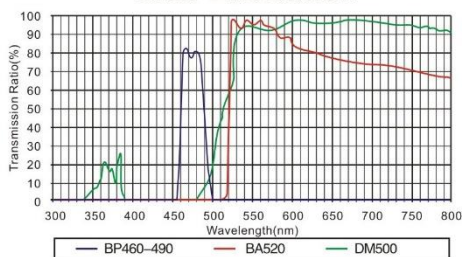
Note: ● Standard Outfit, ○ Optional

BS-7000B Inverted Fluorescent Attachment

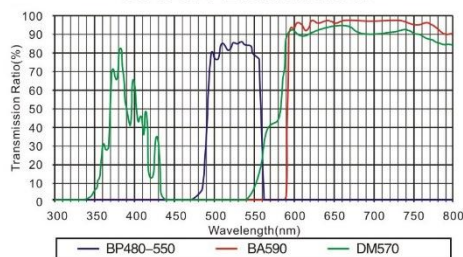


Characteristics of Mirror Units Wavelength

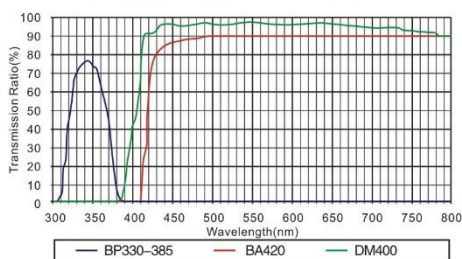
Blue Excitation



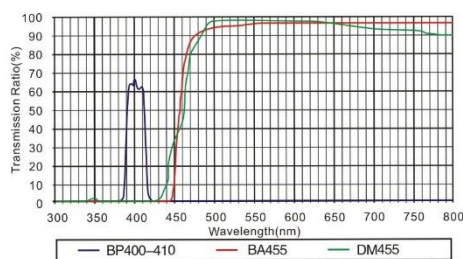
Green Excitation



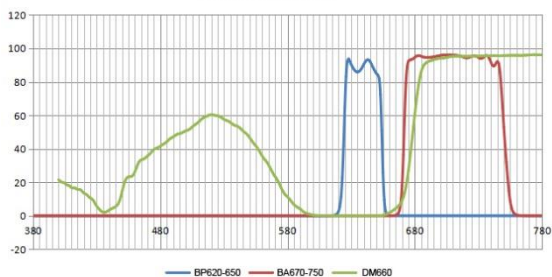
Ultraviolet Excitation



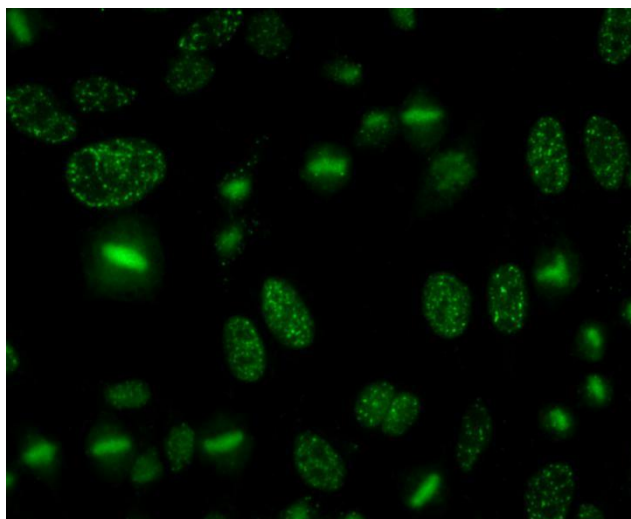
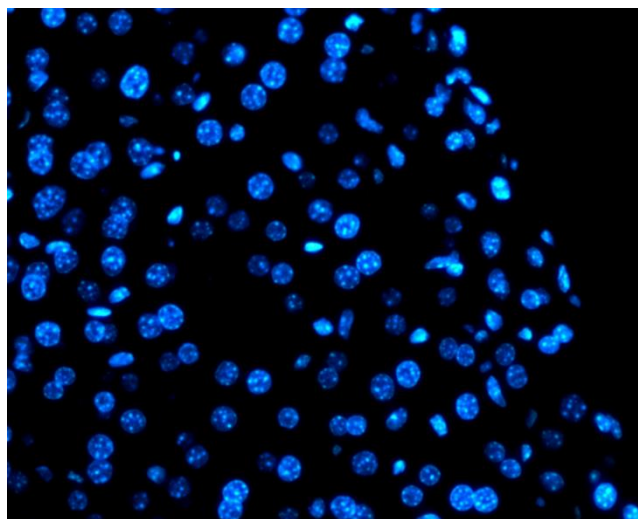
Violet Excitation



Red Excitation



Sample Image



3. BS-7020 Inverted Fluorescent Biological Microscope



Introduction

BS-7020 inverted fluorescence microscope uses mercury lamp as the light source, objects which are radiated then fluoresce, and then the shape of an object and its location can be observed under the microscope. The Microscope is specifically designed for the observation of cell culture. Excellent high resolution objectives provide high quality fluorescent images. Infinite Optical System gives excellent Optical performance. This microscope can be your best assistant in laboratory research.

Feature

1. Perfect image with infinite optical system.
2. High resolution fluorescent objectives are optional for excellent fluorescent images.
3. Advanced and precision lamp housing reduces the light leak.
4. Reliable power supply with digital display and timer.
5. Innovative structure and sharp Image is perfect for viewing cell tissue.

Application

BS-7020 Inverted Fluorescent Biological Microscope is specifically designed for the observation of cell culture. It is widely used in universities, hospitals and life science labs for disease examination, immune diagnosis and scientific research.

Specification

Item	Specification	BS-7020
Optical System	Infinite Optical System	●
Viewing Head	Seidentopf Trinocular Viewing Head, Inclined at 45°, 360° Rotatable, Interpupillary Distance 48-75mm	●
Eyepiece	Wide Field Eyepiece WF10×/ 20mm, Eyepiece Tube Diameter 30mm	●
	Wide Field Eyepiece WF15×/ 16mm	○

	Wide Field Eyepiece WF20×/ 12mm				○
Objective	LWD(Long Working Distance) Infinite Plan Achromatic Objective 4×/0.1, W.D.= 22mm				●
	LWD(Long Working Distance) Infinite Plan Achromatic Phase Objective	10×/ 0.25,	W.D.= 6mm		●
		20×/ 0.4,	W.D.= 3.1mm		●
		40×/ 0.55,	W.D.= 2.2mm		●
	High Level Phase Contrast Objective	10×/ 0.25,	W.D.= 6mm		○
		20×/ 0.4,	W.D.= 3.1mm		○
		40×/ 0.55,	W.D.= 2.2mm		○
Lamp House Adjustment Objective				○	
Nosepiece	Backward Quintuple Nosepiece				●
Condenser	ELWD(Extra Long Working Distance) Condenser NA 0.3, LWD 72mm (Without Condenser 150mm)				●
Telescope	Centering Telescope (Φ30mm)				●
Phase Annular	10×, 20×, 40× Phase Annular Plate(Center Adjustable)				●
Stage	Plain Stage 230×170mm				●
	Glass Insert Plate				●
	Attachable Mechanical Stage, X,Y Coaxial Control, Moving Rang 80mm×120mm				●
	Auxiliary Stages 70mm×180mm				●
	Terasaki Holder				●
	Petri Dish Holder Φ38mm				●
	Petri Dish Holder Φ54mm				●
Focusing	Coaxial Coarse and Fine Adjustment, Fine Division 0.002mm, Moving Range up 4.5mm, down 4.5mm				●
Transmitted Illumination	Halogen Lamp 6V/30W, Brightness Adjustable				●
	LED lamp 5W, Brightness Adjustable				○
Reflected Light Source		Excitation	Dichroic Mirror	Barrier Filter	
	Blue excitation	BP460~490	DM500	BA520	●
	Green excitation	BP480~550	DM570	BA590	●
	Ultraviolet excitation	BP330~385	DM400	BA420	○
	Violet excitation	BP400~410	DM455	BA455	○
	Red Excitation	BP620~650	DM660	BA670-750	○
Lamp	100W HBO Ultra Hi-voltage Spherical Mercury Lamp				●
Protection barrier	Barrier to Resist the Ultraviolet Light				●
Power Supplier	Power Supplier NFP-1, 220V/ 110V interchangeable, Digital Display				●
Immersion Oil	Fluorescent Free Oil				●
Centering Target					●
Filter	Blue, Green and Ground Glass, Diameter 45mm				●
Accessories	Photo Adapter (Used to connect Nikon or Canon DSLR camera to the microscope)				○
	0.5× C-mount (Used to directly connect a C-mount digital camera to the microscope)				●
	Modulation Contrast				○
Package	2 cartons/set, 36*61*62cm, 18kg; 38*45*26cm, 6kg				●

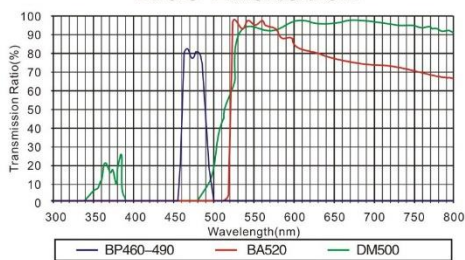
Note: ● Standard Outfit, ○ Optional

BS-7020 Inverted Fluorescent Attachments

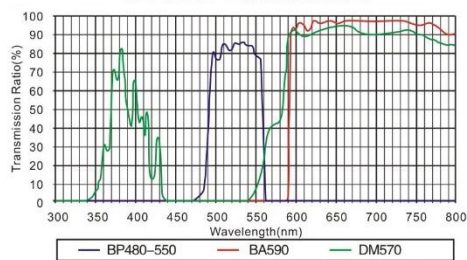


Characteristics of Mirror Units Wavelength

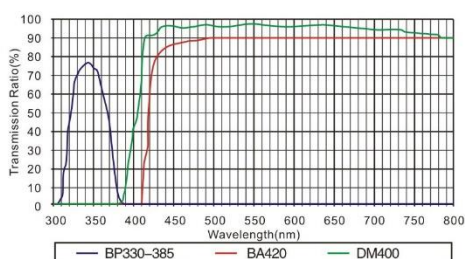
Blue Excitation



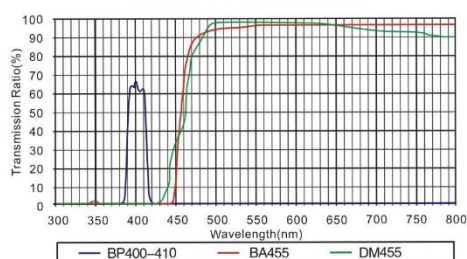
Green Excitation



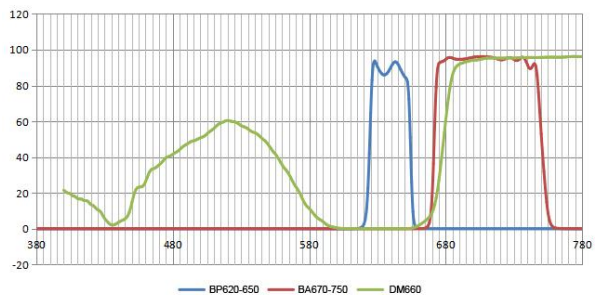
Ultraviolet Excitation



Violet Excitation



Red Excitation



Sample Image

