

BSL2-150A Cold Light Source



Single Rigid Fiber



Double Rigid Fiber



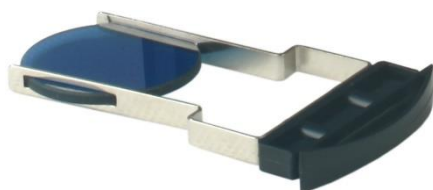
Ring Flexible Fiber

Introduction

BSL2-150A Cold Light Source is designed as an auxiliary lighting device for stereo and other microscopes to get better observation results. The Cold light source provides high quality illumination, long working life and saves energy.

Features

- 1. More stable power supply with CE standard electrical parts and circuit.
- 2. Reliable with stable structure.
- 3. Long working life and low noise.
- 4. Filter holder is available to change the color temperature from 3000K to 5000K.



Specification

Item	Specification	BSL2-150A-1	BSL2-150A-2	BSL2-150A-O
Power Supplier	Input Voltage: 176V-265V, 50Hz (110V is optional)	●	●	●
	21V/150W, Philips Lamp (Lamp Model No.: 13629)			
	Lamp Life: 500 hours			
	Color temperature: 3000K			
	Illuminance: 100000Lx			
	Brightness Adjustable			
	Optical Fiber Interface: Φ16mm			
	Cooling: Built In Large-area Radiator and Cooling Fan			
	Size: 230mm×101.6mm×150mm			
	Gross Weight: 2.7 kgs (Optical Fiber not included)			
	Net Weight: 2.1 kgs (Optical Fiber not included)			
Single Light Guide	Single Rigid Fiber, length 550mm, diameter 8mm, with Condenser, 5/8" Standard Interface	●		
Dual Light Guide	Double Rigid Fiber, length 550mm, diameter 8mm, with Condenser, 5/8" Standard Interface		●	
Ring Light Guide	Ring Flexible Fiber, length 550mm, diameter 8mm, 5/8" Standard Interface, Adapter Ring Size Φ50mm/ Φ60mm			●
Filter Holder	Used to change the color temperature	●	●	●
Filter	Light Blue	●	●	●
	Navy Blue, Red, Green	○	○	○
Package	1 set/carton, 285mm×230mm×255mm, 3kg	●	●	●
	4 sets/carton, 540mm*320mm*470mm, 12kg	●	●	●

Note: ● Standard Outfit, ○ Optional