

## BWHC1-4K Series HDMI/WiFi /USB3.0 Multi-outputs C-mount CMOS Camera



BWHC1-4K Series Camera

### Introduction

BWHC1-4K series cameras have been designed for acquisition of digital images from biological microscopes, stereo microscopes and other optical microscopes or online interactive teaching.

### Features

The basic characteristics have been listed as below:

- Sony Exmor/STARVIS back-illuminated CMOS sensor
- 4K HDMI/ WiFi/ USB3.0 multiple video outputs
- 4K/1080P auto switching according to monitor resolution
- SD card/USB flash drive for captured image and video storage, support local preview and playback
- Embedded XCamView for the control of the camera and image processing
- Excellent ISP with local tone mapping and 3D denoising
- View/ Lite software for PC
- iOS/Android applications for smart phones or tablets

### Specification

Order Code	Sensor & Size(mm)	Pixel( $\mu\text{m}$ )	G Sensitivity/Dark Signal	FPS/Resolution	Binning	Exposure(ms)
<b>BWHC1-4K8MPA</b>	Sony IMX678(C) 1/1.8"(7.68x4.32)	2.0x2.0	1364mv with 1/30s 0.15mv with 1/30s	30@3840*2160(HDMI) 30@1920*1080(WiFi) 30@3840*2160(USB3.0)	1x1	0.045~1000
<b>BWHC1-4K8MPB</b>	Sony IMX585(C) 1/1.2"(11.14x6.26)	2.9x2.9	1028mv with 1/30s 0.13mv with 1/30s	30@3840*2160(HDMI) 30@1920*1080(WiFi) 30@3840*2160(USB3.0)	1x1	0.014~1000



Available Ports on the Back Panel of the Camera Body

Interface or Button	Function Description
<b>USB Mouse</b>	Connect USB mouse for easy operation with embedded <b>XCamView</b> software
<b>USB2.0</b>	Connect USB flash drive to save pictures and videos Connect 5G WiFi module to transfer video wirelessly in real time
<b>USB Video</b>	Connect PC or other host device to realize video image transmission
<b>HDMI</b>	Comply with HDMI1.4 standard. 4K/1080P format video output and supporting automatic switch between 4K and 1080P format according to the connected monitors
<b>SD</b>	Comply with SDIO3.0 standard and SD card could be inserted for video and images saving
<b>ON/OFF</b>	Power switch
<b>LED</b>	LED status indicator
<b>DC12V</b>	Power adapter connection (12V/1A)
Video Output Interface	Function Description
<b>HDMI Interface</b>	Comply with HDMI1.4 standard 30fps@4K or 30fps@1080P
<b>WiFi Interface</b>	Connecting 5G WiFi adapter (USB2.0 slot) in AP/STA mode 1080P H264 format video, 8M (3840*2160) image
<b>USB Video Interface</b>	Connecting USB3.0 Video port of PC for video transfer H264/NV12/MJPEG format video
Other Function	Function Description
<b>Video Saving</b>	Video format: 8M(3840*2160) H264/H265 encoded MP4 file Video saving frame rate:30fps
<b>Image Capture</b>	8M (3840*2160) JPEG/TIFF image in SD card or USB flash drive
<b>Measurement Saving</b>	Measurement information saved in different layer with image content Measurement information is saved together with image content in burn in mode
<b>ISP</b>	Exposure(Automatic / Manual Exposure) / Gain, White Balance(Manual / Automatic / ROI Mode), Sharpening, 3D Denoise, Saturation Adjustment, Contrast Adjustment, Brightness Adjustment, Gamma Adjustment, Color to Gray, 50HZ/60HZ Anti-flicker Function
<b>Image Operation</b>	Zoom In/Zoom Out(Up to 10X), Mirror/Flip, Freeze, Cross Line, Compare(Comparison between real time video and images in SD card or USB flash drive ), Embedded Files Browser, Video Playback, Measurement Function
<b>Embedded</b>	To support accurate time on board

<b>RTC(Optional)</b>	
<b>Restore Factory Settings</b>	Restore camera parameters to its factory status
<b>Multiple Language Support</b>	English / Simplified Chinese / Traditional Chinese / Korean / Thailand / French / German / Japanese / Italian / Russian
<b>Software Environment under WiFi/USB Video Output</b>	
<b>White Balance</b>	Auto White Balance
<b>Color Technique</b>	Ultra-Fine Color Engine
<b>Capture/Control SDK</b>	Windows/Linux/macOS/Android Multiple Platform SDK(Native C/C++, C#/VB.NET, Python, Java, DirectShow, Twain, etc)
<b>Recording System</b>	Still Picture or Movie
<b>Operating System</b>	Microsoft® Windows® XP / Vista / 7 / 8 / 8.1 /10/ 11(32 & 64 bit) OSx(Mac OS X) Linux
<b>PC Requirements</b>	CPU: Equal to Intel Core2 2.8GHz or Higher
	Memory: 4GB or More
	Display:19" or Larger
	CD-ROM
<b>Operating Environment</b>	
<b>Operating Temperature (in Centidegree)</b>	-10°~ 50°
<b>Storage Temperature (in Centidegree)</b>	-20°~ 60°
<b>Operating Humidity</b>	30~80%RH
<b>Storage Humidity</b>	10~60%RH
<b>Power Supply</b>	DC 12V/1A Adapter

## Dimension



Dimension of BWHC1-4K Series Camera

## Packing Information

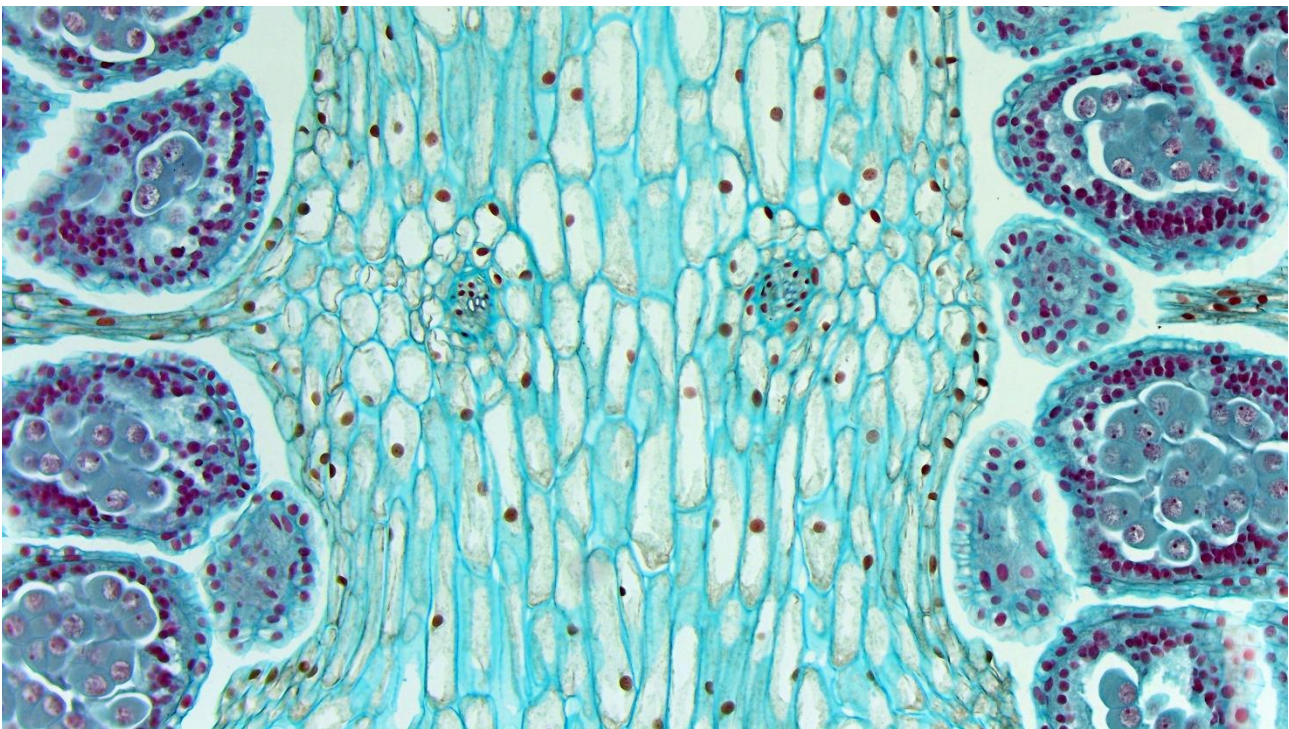


BWHC1-4K Series Camera Packing Information

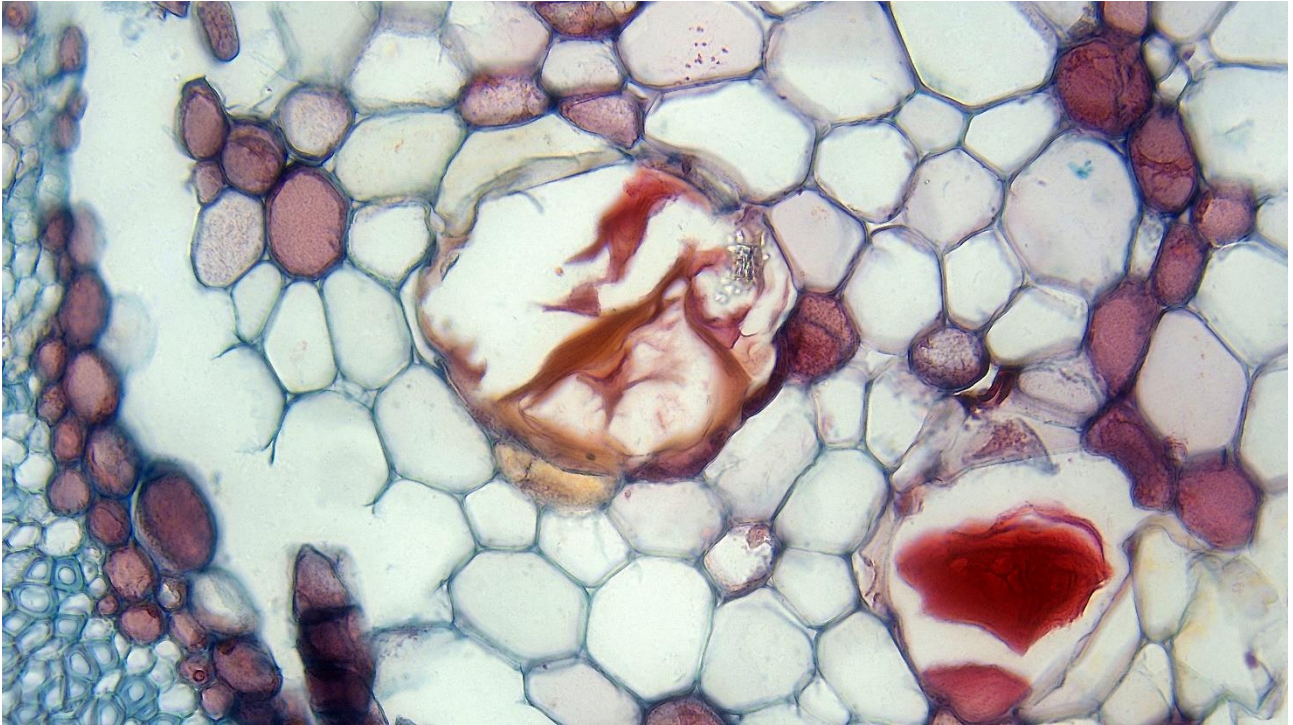
Standard Packing List			
<b>A</b>	Gift box: L:25.5cm W:17.0cm H:9.0cm (1pcs, 1.57Kg/ box)		
<b>B</b>	BWHC1-4K Camera (One of the two different shapes)		
	Power Adapter: Input: AC 100~240V 50Hz/60Hz, Output: DC 12V 1A <b>American standard:</b> Model: POWER-U-12V1A(MSA-C1000IC12.0-12W-US): UL/CE/FCC <b>European standard:</b> Model: POWER-E-12V1A(MSA-C1000IC12.0-12W-DE): UL/CE/FCC <b>C</b> EMI standard: FCC Part 15 Subpart B EMS standard: EN61000-4-2,3,4,5,6		
<b>D</b>	USB Mouse		
<b>E</b>	HDMI Cable		
<b>F</b>	USB3.0 A male to A male gold-plated connectors cable /2.0m		
<b>G</b>	CD (Driver & utilities software, Ø12cm)		
Optional Accessory			
<b>H</b>	SD Card(16G or above; Speed: class 10)		
<b>I</b>	Adjustable lens adapter	C-Mount to Dia.23.2mm Eyepiece Tube (Please choose 1 of them for your microscope)	BCN2A-0.37× BCN2A-0.5× BCN2A-0.75× BCN2A-1×
<b>J</b>	Fixed lens adapter	C-Mount to Dia.23.2mm Eyepiece Tube (Please choose 1 of them for your microscope)	BCN2F-0.37× BCN2F-0.5× BCN2F-0.75× BCN2F-1×

	<b>Note:</b> For <b>K</b> and <b>L</b> optional items, please specify your camera type (C-mount, microscope camera or telescope camera), engineer will help you to determine the right microscope or telescope camera adapter for your application;	
K	108015(Dia.23.2mm to 30.0mm Ring)/Adapter rings for 30mm eyepiece tube	
L	108016(Dia.23.2mm to 30.5mm Ring)/ Adapter rings for 30.5mm eyepiece tube	
M	Calibration kit	106011/TS-M1(X=0.01mm/100Div.); 106012/TS-M2(X,Y=0.01mm/100Div.); 106013/TS-M7(X=0.01mm/100Div., 0.10mm/100Div.)
N	USB flash drive	
O	USB WiFi adapter	

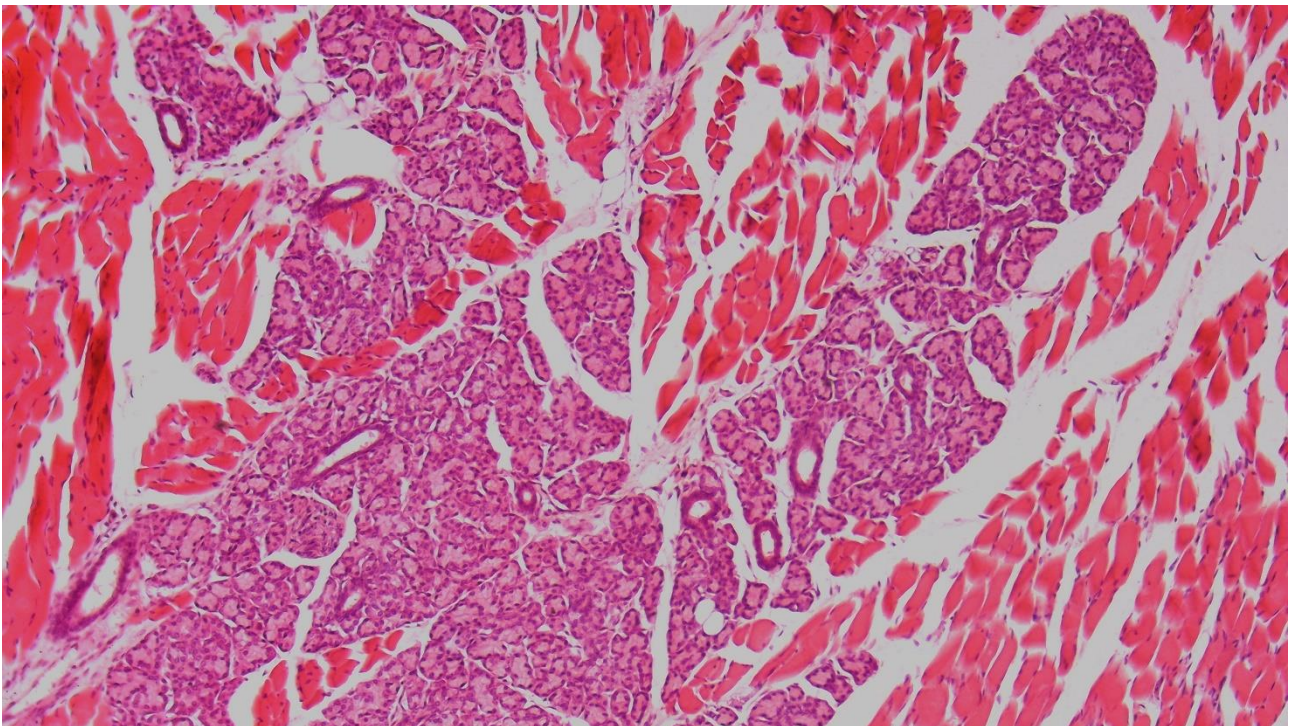
### Sample Images



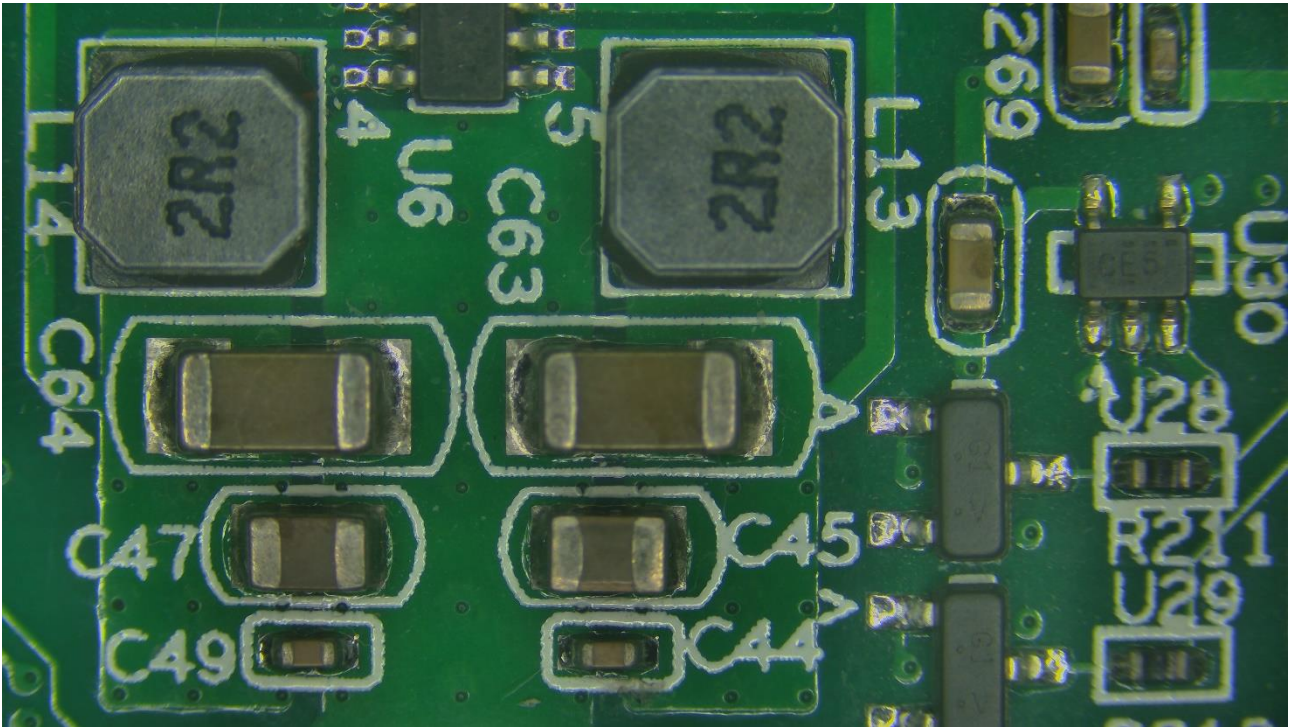
Longitudinal Section Of Equisetum Sporophyll Captured with BWHC1-4K8MPA



Lime Wood Stem CS Captured with BWHC1-4K8MPA



Taste Bud.Sec. Captured with BWHC1-4K8MPA



Circuit Board Captured with BWHC1-4K8MPA