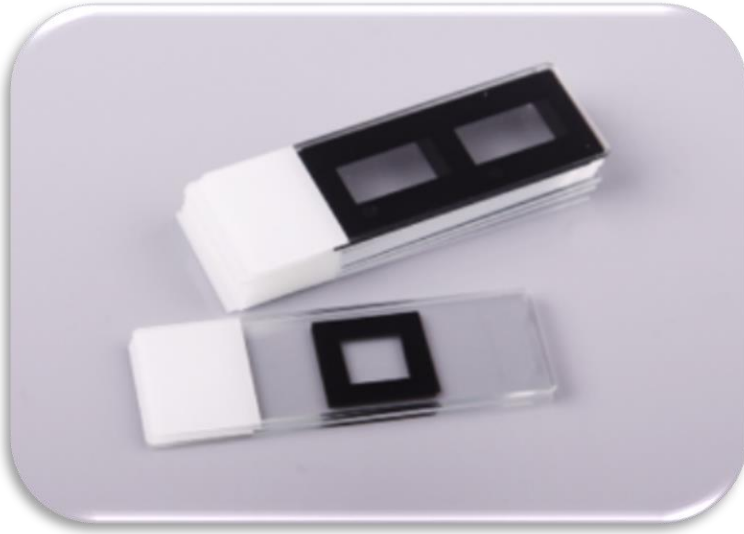


C type Diagnostic Microscope Slides



FEATURE

- * The slide surface is coated with PTFE to produce different grid according to the needs of customers. Due to the excellent barrier property of PTFE, the blood can be well kept in the grid to facilitate microscopic observation and search for pathological cells.
- * C type Diagnostic Microscope Slides also known as CTC special slide, suitable for the detection of tumor cells in human peripheral circulation.
- * Provide customized C type Diagnostic Microscope Slides according to customer needs.